

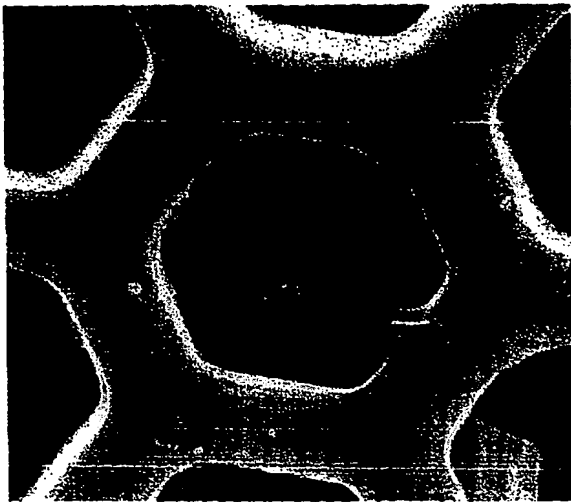
# BEST AVAILABLE COPY

PCT

WORLD INTELLECTUAL PROPERTY ORGANIZATION  
International Bureau



INTERNATIONAL APPLICATION PUBLISHED UNDER THE PATENT COOPERATION TREATY (PCT)

(51) International Patent Classification <sup>6</sup> : <b>G01N</b>	<b>A2</b>	(11) International Publication Number: <b>WO 99/45357</b> (43) International Publication Date: 10 September 1999 (10.09.99)
<p>(21) International Application Number: PCT/US99/04473</p> <p>(22) International Filing Date: 2 March 1999 (02.03.99)</p> <p>(30) Priority Data: 09/033,462 2 March 1998 (02.03.98) US</p> <p>(71) Applicant (for all designated States except US): TRUSTEES OF TUFTS COLLEGE [US/US]; Tufts University, Ballou Hall, Medford, MA 02155 (US).</p> <p>(72) Inventors; and (75) Inventors/Applicants (for US only): WALT, David, R. [US/US]; 4 Candlewick Close, Lexington, MA 02178 (US). TAYLOR, Laura [US/US]; 15A Bradbury Avenue, Medford, MA 02155 (US).</p> <p>(74) Agent: CREEHAN, R., Dennis; P.O. Box 750070, Arlington Heights, MA 02175-0070 (US).</p>		<p>(81) Designated States: AL, AM, AT, AU, AZ, BA, BB, BG, BR, BY, CA, CH, CN, CU, CZ, DE, DK, EE, ES, FI, GB, GD, GE, GH, GM, HU, ID, IL, IN, IS, JP, KE, KG, KP, KR, KZ, LC, LK, LR, LS, LT, LU, LV, MD, MG, MK, MN, MW, MX, NO, NZ, PL, PT, RO, RU, SD, SE, SG, SI, SK, SL, TJ, TM, TR, TT, UA, UG, US, UZ, VN, YU, ZW, ARIPO patent (GH, GM, KE, LS, MW, SD, SL, SZ, UG, ZW), Eurasian patent (AM, AZ, BY, KG, KZ, MD, RU, TJ, TM), European patent (AT, BE, CH, CY, DE, DK, ES, FI, FR, GB, GR, IE, IT, LU, MC, NL, PT, SE), OAPI patent (BF, BJ, CF, CG, CI, CM, GA, GN, GW, ML, MR, NE, SN, TD, TG).</p> <p><b>Published</b> Without international search report and to be republished upon receipt of that report.</p>
<p>(54) Title: BIOSENSOR ARRAY COMPRISING CELL POPULATIONS CONFINED TO MICROCAVITIES</p>		
<p>(57) Abstract</p> <div style="display: flex;"> <div style="flex: 1;"> <p>A biosensor, sensor array, sensing method and sensing apparatus are provided in which individual cells or randomly mixed populations of cells, having unique response characteristics to chemical and biological materials, are deployed in a plurality of discrete sites in a substrate. In a preferred embodiment, the discrete sites comprise microwells formed at the distal end of individual fibers within a fiber optic array. The biosensor array utilizes an optically interrogatable encoding scheme for determining the identity and location of each type in the array and provides for simultaneous measurements of large numbers of individual cell responses to target analytes. The sensing method utilizes the unique ability of cell populations to respond to biologically significant compounds in a characteristic and detectable manner. The biosensor array and measurement method may be employed in the study of biologically active materials, in situ environmental monitoring, monitoring of a variety of bioprocesses, and for high throughput screening of large combinatorial chemical libraries.</p> </div> <div style="flex: 1; text-align: center;">  </div> <div style="flex: 1;"> <p>Scanning Electron Micrograph (SEM) of a single NIH 3T3 mouse fibroblast cell in an etched microwell. Each well has a diameter of 7µm, a depth of 5µm, and a volume of ~145fL.</p> </div> </div>		

**FOR THE PURPOSES OF INFORMATION ONLY**

Codes used to identify States party to the PCT on the front pages of pamphlets publishing international applications under the PCT.

AL	Albania	ES	Spain	LS	Lesotho	SI	Slovenia
AM	Armenia	FI	Finland	LT	Lithuania	SK	Slovakia
AT	Austria	FR	France	LU	Luxembourg	SN	Senegal
AU	Australia	GA	Gabon	LV	Latvia	SZ	Swaziland
AZ	Azerbaijan	GB	United Kingdom	MC	Monaco	TD	Chad
BA	Bosnia and Herzegovina	GE	Georgia	MD	Republic of Moldova	TG	Togo
BB	Barbados	GH	Ghana	MG	Madagascar	TJ	Tajikistan
BE	Belgium	GN	Guinea	MK	The former Yugoslav Republic of Macedonia	TM	Turkmenistan
BF	Burkina Faso	GR	Greece	ML	Mali	TR	Turkey
BG	Bulgaria	HU	Hungary	MR	Mauritania	TT	Trinidad and Tobago
BJ	Benin	IE	Ireland	MN	Mongolia	UA	Ukraine
BR	Brazil	IL	Israel	MR	Mauritania	UG	Uganda
BY	Belarus	IS	Iceland	MW	Malawi	US	United States of America
CA	Canada	IT	Italy	MX	Mexico	UZ	Uzbekistan
CF	Central African Republic	JP	Japan	NE	Niger	VN	Viet Nam
CG	Congo	KE	Kenya	NL	Netherlands	YU	Yugoslavia
CH	Switzerland	KG	Kyrgyzstan	NO	Norway	ZW	Zimbabwe
CI	Côte d'Ivoire	KP	Democratic People's Republic of Korea	NZ	New Zealand		
CM	Cameroon	KR	Republic of Korea	PL	Poland		
CN	China	KZ	Kazakhstan	PT	Portugal		
CU	Cuba	LC	Saint Lucia	RO	Romania		
CZ	Czech Republic	LI	Liechtenstein	RU	Russian Federation		
DE	Germany	LK	Sri Lanka	SD	Sudan		
DK	Denmark	LR	Liberia	SE	Sweden		
EE	Estonia			SG	Singapore		

## BIOSENSOR ARRAY COMPRISING CELL POPULATIONS CONFINED TO MICROCAVITIES

## FIELD OF THE INVENTION

The present invention is generally concerned with biosensors, biosensor arrays, and sensing apparatus, and sensing methods for the analysis of chemical and biological materials. More particularly, the invention is directed to biosensors, biosensor arrays, sensing apparatus and sensing methods which employ cells and mixed populations of cells for analysis of chemical and biological materials.

## BACKGROUND OF THE INVENTION

It is generally recognized that important technical advances in chemistry, biology and medicine benefit from the ability to perform microanalysis of samples in minute quantities. However, making analytical measurements on minute quantities has long been a challenge due to difficulties encountered with small volume sample handling, isolation of analytes, and micro-analysis of single-cell physiology.

Nanoliter, picoliter, and femtoliter volume studies have been explored in a range of applications involving in vitro and in vivo cellular investigations [R.M. Wightman, et al., *Proc. Natl. Acad. Sci. U.S.A.* 88:10754(1991); R.H. Chow, et al. *Nature* 356:60(1992); T.K. Chen, et al. *Anal. Chem.* 66:3031(1994); S.E. Zerby, et al., *Neurochem.* 66:651(1996); P.A. Garis, et al. *J. Neurosci.* 14:6084(1994); G. Chen, et al., *J. Neurosci.* 15:7747(1995)], electrochemistry [R.A. Clark, et al., *Anal. Chem.* 69(2):259(1997)], matrix-assisted laser desorption- ionization mass spectrometry [S. Jespersen, et al., *Rapid Commun. Mass Spectrom.* 8:581(1994)], micro-column liquid chromatography [I.A. Holland, et al., *Anal. Chem.* 67:3275(1995); M.D. Oates, et al., *Anal. Chem.* 62:1573(1990)], micro-titration [M. Gratzl, et al *Anal. Chem.* 65:2085(1993); C. Yi, et al., *Anal. Chem.* 66:1976(1994)], and capillary electrophoresis [M. Jansson, et al., *J. Chromatogr.* 626:310(1992); P. Beyer Hietpas, et al. *J. Liq. Chromatogr.* 18:3557(1995)].

Clark, et al. [*Anal. Chem.* 69(2):259(1997)] has disclosed a method for fabricating picoliter microvials for electrochemical microanalysis using conventional photolithographic masking and photoresist techniques to transfer mold polystyrene microvials on silicon wafer templates. These

microvials typically exhibit non-uniformity in size and shape due to the difficulty in controlling the resist etching of the molding surface and the transfer molding process.

Park, et al. [*Science* 276:1401(1997)] has disclosed a modified lithographic method for producing arrays of nanometer-sized holes using polystyrene-polybutadiene, ordered, diblock copolymers as masks in reactive ion etching of silicon nitride. This multi-step method is capable of producing arrays of picoliter-sized holes which are typically 20 nanometers in diameter and 20 nanometers deep with a spacing of 40 nanometers. Hole densities of up to  $10^{11}$  holes/cm<sup>2</sup> are disclosed. The range of sizes and spacings of the holes produced by this method is limited by the size of the copolymer microdomains. Uniformity of hole size and spacing is difficult to maintain with this method due to difficulties in controlling the etching method employed to form the holes.

Deutsch, et al. [*Cytometry* 16:214(1994)] have disclosed a porous electroplated nickel microarray comprised of micron-sized conical holes in blackened nickel plate. Hole sizes range from a 7  $\mu$ m upper diameter to a 3  $\mu$ m lower diameter with an 8  $\mu$ m depth. The array is used as a cell carrier for trapping individual cells while studying the responses of individual cells to changes in their microenvironment. In U.S. Patent 4,772,540, Deutsch, et al., have also disclosed a method for making such an array using a combined photoresist and electroplating technique.

Corning Costar Corp. (Acton, Ma) produces a commercial microwell array for miniaturized assays under the trademark PixWell<sup>TM</sup>. These arrays are made from microformed glass plates and comprise 40  $\mu$ m diameter by 20  $\mu$ m deep tapered wells with a well density of 4356 wells/cm<sup>2</sup>.

Microwell arrays have particular utility in the study of living cells. In cell research, the measurement of responses of individual cells to changes or manipulations in their local environment is desirable. Any method or device designed for such studies must provide for the capability of maintaining cell viability, identifying the location of individual cells, and correlating response measurements with individual cells.

Due to the availability of viable fluorescent probes for intracellular studies, fluorescence measurements of living cells have significant utility in the study of cell functions. Thus fluorescence optical measurements are often utilized in cell studies where three generic methods of cell measurement are available, comprising bulk measurements of cell populations, dynamic measurements of cell populations or individual cells, and static measurements of individual cells.

The characteristics of an entire cell population as a whole can be studied with bulk measurements of sample volumes having a plurality of cells. This method is preferred where cell populations are very homogeneous. A generally recognized limitation of this method is the presence of background fluorescence which reduces the sensitivity of measurements and the inability of distinguishing differences or heterogeneity within a cell population.

Flow cytometry methods are often employed to reduce problems with background fluorescence which are encountered in bulk cell population measurements [M.R.Gauci, et al., *Cytometry* 25:388(1996); R.C.Boltz, et al., *Cytometry* 17:128(1994)]. In these methods, cell fluorescence emission is measured as cells are transported through an excitation light beam by a laminar flowing fluid. Flow cytometry methods may be combined with static methods for preliminary sorting and depositing of a small number of cells on a substrate for subsequent static cell measurements [U.S. Patent No. 4,009,435 to Hogg, et al.; Kanz, et al., *Cytometry* 7:491(1986); Schildkraut, et al., *J.Histochem Cytochem* 27:289(1979)].

Gauci, et al., disclose a method where cell size, shape and volume is measured by light scattering and fluorescent dyes are utilized to determine protein content and total nucleic acid content of cells. This method further provides for counting and sizing various cells at a rate of approximately 100 cells per second.

Flow cytometry techniques are generally limited to short duration, single measurements of individual cells. Repetitive measurements on the same cell over time are not possible with this method since typical dwell times of a cell in the excitation light beam are typically a few microseconds. In addition, the low cumulative intensity from individual cell fluorescence emissions during such short measurement times reduces the precision and limits the reliability of such measurements.

Regnier, et al., [*Trends in Anal.Chem.* 14(4):177(1995)] discloses an invasive, electrophoretically mediated, microanalysis method for single cell analysis. The method utilizes a tapered microinjector at the injection end of a capillary electrophoresis column to pierce an individual cell membrane and withdraw a sample of cytoplasm. The method measures cell contents, one cell at a time. The method is generally limited to the detection of easily oxidized species.

Hogan, et al., [*Trends in Anal.Chem.* 12(1):4(1993)] discloses a microcolumn separation technique which may be utilized in combination with either a conventional gas chromatograph-mass spectrometer, micro thin layer chromatography or high pressure liquid manipulation of small cellular

volumes. The sensitivity of the method is limited and may require pre-selection of target compounds for detection.

Static methods are generally the preferred method for measurements on individual cells. Measurement methods range from observing individual cells with a conventional optical microscope to  
5 employing laser scanning microscopes with computerized image analysis systems [see L. Hart, et al., *Anal. Quant. Cytol. Histol.* 12:127(1990)]. Such methods typically require the attachment of individual cells to a substrate prior to actual measurements. Problems are typically encountered in attaching single cells or single layers of cells to substrates and in maintaining cells in a fixed location during analysis or manipulation of the cell microenvironment. Additionally, repetitive measurements on  
10 individual cells typically require physically indexing the location of individual cells and providing a mechanism for scanning each cell sequentially and returning to indexed cell locations for repeated analysis of individual cells.

Huang, et al., [*Trends in Anal. Chem.*, 14(4):158(1995)] discloses a static electrochemical method and electrode for monitoring the biochemical environment of single cells. The method  
15 requires fabrication and manual positioning of a microelectrode reference and working electrode within the cell. The method has been used to detect insulin, nitric oxide and glucose inside single cells or external to the cells. The method is generally limited to the study of redox reactions within cells.

Ince, et al. [*J. Immunol. Methods* 128:227(1990)] disclose a closed chamber device for the  
20 study of single cells under controlled environments. This method employs a micro-perfusion chamber which is capable of creating extreme environmental conditions for cell studies. Individual cells are held in place by two glass coverslips as various solutions are passed through the chamber. One limitation of the method is the difficulty in eliminating entrapped gas bubbles which cause a high degree of autofluorescence and thus reduces the sensitivity of measurements due to background  
25 fluorescence.

In an attempt to overcome the limitations encountered with conventional static methods, Deutsch, et al., [*Cytometry* 16:214(1994)] and Weinreb and Deutsch, in U.S. Patent Nos. 4,729,949, 5,272,081, 5,310,674, and 5,506,141, have disclosed an apparatus and method for repetitive optical measurements of individual cells within a cell population where the location of each cell is preserved  
30 during manipulation of the cell microenvironment.

A central feature of the apparatus disclosed by Deutsch, et al., is a cell carrier, comprising a two dimensional array of apertures or traps which are conical-shaped in order to trap and hold individual cells by applying suction. The cell carrier is typically fabricated by the combined electroplating-photoresist method disclosed in U.S. Patent 4,772,540 to Deutsch, et al. The purpose of the cell carrier is to provide a means for maintaining the cells in fixed array locations while manipulating the cell environment. Individual cells are urged into cell carrier holes by suction and the wells are subsequently illuminated with a low-intensity beam of polarized light that reads back-emitted polarization and intensity. Measurements are compared when two different reagents are sequentially reacted with the cells. The method as disclosed requires two separate cell carriers for both a baseline control and analyte measurement.

The method and device of Deutsch, et al., have been employed by pathologists in diagnostic tests to determine the health and viability of cell samples taken from patients. The method and device have been applied to both cancer screening [Deutsch, et al., *Cytometry* 16:214(1994), *Cytometry* 23:159(1996), and *European J. Cancer* 32A(10):1758(1996)] and rheumatoid arthritis [Zurgil, et al., *Isr.J.Med.Sci.* 33:273(1997)] in which fluorescence polarization measurements are used to differentiate lymphocytes of malignant versus healthy cells based on changes in the internal viscosity and structuredness of the cytoplasmic matrix induced by exposure to tumor antigen and mitogens.

The method and device disclosed by Deutsch, et al., requires employment of a scanning table driven by three stepping motors and a computer control system for mapping, indexing and locating individual cells in the cell carrier. The use of such mechanical scanning methods introduces limitations in reproducibility and accuracy of measurements due to conventional mechanical problems encountered with backlash and reproducible positioning of individual cell locations for repeated measurements. In addition, mechanical scanning of the entire array prolongs the measurement time for each cell in the array.

The method disclosed by Deutsch, et al., is further limited by the use of fluorescence polarization measurements which have certain intrinsic limitations due to the significant influence of various optical system components on polarization as the fluorescence emission response is passed from the cell carrier to optical detectors. Birindelli, et al. [*European J. Cancer* 33(8):1333(1997)], has also identified limitations in this method due to fluctuations in electropolarisation values which require taking averages of at least three measurement scans for each condition so as to obtain reliable

measurements. In addition, for cell studies, polarization measurements are generally limited to cell responses which produce sufficient changes in cytoplasm viscosity to produce a detectable change in polarization. Since not all cell responses are accompanied by detectable viscosity changes, the method is further limited to the cell activities which create such viscosity changes in the cytoplasm.

5       Zare, et al., [*Science* 267:74(1995); *Biophotonics International*, March-April, p17 (1995)] discloses a biosensor system based on the response of living cells to complex biological materials fractionated by a microcolumn separation technique. Cells which were positioned on a glass cover slip were treated with a fluorescent probe and subsequently shown to be sensitive to a series of biological compounds including acetylcholine, bradykinin, and adenosine triphosphate as well as  
10       changes in intracellular calcium levels.

      Yeung, et al. [*Acc. Chem. Res.* 27:409(1994)] has reviewed a number of methods for single cell response studies and has observed a significant variation and heterogeneity within cell populations based on analyte measurements. For example, the reference discloses a capillary electrophoresis method for exposing cells to biologically reactive compounds, extracting the  
15       intracellular fluid of individual cells produced in response to such compounds, and identifying analytes from migration times in the capillary column. Other fluorescence-based assays are also disclosed. Significant cell-to-cell variations and heterogeneity in individual cell responses within a cell population were observed which differences could provide a means for discriminating between biological and chemical compounds in contact with individual cells.

20       McConnell, et al. [*Science*, 257:1906(1992)], disclose a microphysiometer device known as the "Cytosensor" which uses a light addressable potentiometer sensor to measure the rate at which cells acidify their environment. This sensor acts as miniaturized pH electrode for monitoring cell responses which produce detectable changes in local pH. The disclosed device is limited to the measurement of proton excretions from cells and thus is only capable of detecting acidic cell  
25       responses to analytes.

      U.S. Patent No. 5,177,012 to Kim, et al., disclose a biosensor for the determination of glucose and fructose. The biosensor is produced by treating whole cells with an organic solvent and immobilizing the treated cells residue on a support to form a whole cell membrane which is applied to a pH electrode.



U.S. Patent No. 5,690,894 to Pinkel, et al., discloses a biosensor which employs biological "binding partners", materials such as nucleic acids, antibodies, proteins, lectins and other materials derived from cells, tissues, natural or genetically-engineered organisms. These agents are used in conjunction with a fiber optic array where each species of binding partners is uniquely addressed by a group of fibers within the fiber optic bundle which is coupled to an optical detector. The array was designed for screening of extensive arrays of biological binding partners.

While many of the prior art methods provide for the analysis of either single cells or populations of cells and some of these methods provide for monitoring cell responses to target analytes, none of the disclosed methods provides for employing large populations of monocultures or mixed populations of living cells for simultaneously monitoring the responses of individual cells to biological stimuli produced by chemical and biological analytes. Thus there is a need for a biosensor array and method which efficiently utilizes the ability of populations of living cells to respond to biologically significant compounds in a unique and detectable manner. Since the selectivity of living cells for such compounds has considerable value and utility in drug screening and analysis of complex biological fluids, a biosensor which makes use of the unique characteristics of living cell populations would offer distinct advantages in high throughput screening of combinatorial libraries where hundreds of thousands of candidate pharmaceutical compounds must be evaluated. In addition, such a sensor would be useful in monitoring bioprocesses and environmental pollution where the enhanced sensitivity of living cells to their environment can be exploited.

#### SUMMARY OF THE INVENTION

In general, the invention provides for a biosensor, a biosensor array, a biosensor sensing system and sensing methods for the analysis of chemical and biological materials. More particularly, the invention provides for biosensors and biosensor arrays, sensing apparatus and sensing methods which employ living cells and mixed populations of living cells for analysis of chemical and biological materials.

The biosensor array of the present invention comprises either a monoculture of living cells or randomly mixed populations of living cells wherein each individual cell in the array is positioned on a substrate at an optically-addressable, discrete site which accommodates the size and shape of individual cells. In one embodiment, the discrete site comprises a microwell or microcavity which is

preformed to accommodate the size and shape of the individual cells. The biosensor array sensing method relies on the well known fact that individual cells, which are chemically or biologically stimulated by the presence of a biological or chemical material in the cell environment, will respond by producing a change in the cell or cellular environment which can be optically interrogated and detected within the cell itself or from an indicator compound, for example, a fluorophore, chromophore or dye, either attached to the cell, taken up in the cell, or added to the local cell environment. The biosensor of the present invention thus capitalizes on the ability of living cells to respond to biologically significant compounds. Since the selectivity of living cells for such compounds has considerable value and utility in drug screening and analysis of complex biological fluids, the biosensor of the present invention offers distinct advantages to high throughput screening of combinatorial libraries where hundreds of thousands of candidate compounds must be evaluated.

As will be appreciated by one skilled in the art, a variety of substrate materials and substrate configurations may be employed with the biosensor array of the present invention. Any substrate or material that can be adapted to provide discrete sites that are appropriate for the attachment or association of individual cells and is accessible for optical interrogation of the cell array and detection of cell responses would be particularly useful as an array substrate. Candidate substrate materials include, but are not limited to, glasses, polymers, ceramics, metals, and composites formed from these materials. Substrate surface geometries may be planer, spherical, concave, convex, and textured. Preferably, a suitable substrate would be configured so as to provide for optical interrogation of the array and detection of cell responses to analytes of interest.

In a preferred embodiment, the biosensor array of the present invention is incorporated into a fiber optic array which serves as a substrate for cell placement. By "fiber optic array" or other grammatical equivalents herein is meant a plurality of individual fibers or fiber strands that may be either grouped together as discrete, individual fibers in a fiber bundle or, alternatively, joined along their axial dimensions as a preformed unitary fiber optic array. The individual fibers in such an array may be arranged in a uniform or coherent configuration, for example as in an imaging fiber, or may be randomly oriented and incoherent. When a fiber optic array is employed as a sensor substrate, the distal end of each fiber in a fiber optic bundle or fiber optic array is chemically etched so as to create a cavity or microwell. A schematic diagram of the biosensor array concept of the present invention is shown in Fig. 1. In a preferred embodiment, individual living cells of either a monoculture of cells or

mixed populations of cell lines are deployed in the microwells. The microwells are formed by anisotropic etching of the cores of the individual fiber in the fiber bundle or fiber array. The microwells are formed by controlling the etching process so as to remove a centralized core portion of the individual fiber strands while leaving the surrounding cladding intact. The resultant etched cavity is dimensioned for accommodating an individual cell. By selecting a fiber optic bundle or fiber optic array whose individual fiber cores are appropriately sized and by careful control of the etching conditions, the diameter and depth of the microwells can be controlled and adjusted over any convenient dimension range so as to match the size of any desired cell type.

In one embodiment, either discrete substrate cites or the interior surfaces of the microwells may be coated with a thin film of biologically compatible material such as collagen, fibronectin, polylysine, polyethylene glycol, polystyrene, or a metal such as gold, platinum or palladium. In an alternative embodiment, an indicator compound, for example, a fluorophore, a chromophore or dye, may be attached to the microwell surface for detecting cell responses to chemical or biological stimulation.

By incorporating a biosensor into an optically interrogatable substrate or a fiber optic array, the innovation of the biosensor of the present invention is in providing for optical coupling of individual cells located at discrete substrate cites or microwells with discrete detector elements, CCD cameras, or individual optical fibers in a fiber optic array or bundle that are in optical communication with such devices. By "optical coupling", "optical communication", or "optical cooperation" or other grammatical equivalents herein is meant the capability of either optically stimulating individual cells within the biosensor array with excitation light or optically interrogating the optical response of individual cells within the array to analytes, by conveying light to and from individual cells located at discrete cites within the array using either conventional optical train elements or optical fibers. Since typical fiber optic arrays contain thousands of discrete individual fiber strands, the invention thus provides for the individual optical coupling and interrogation of thousands of cells within an array, thereby providing for a large number of independent cell response measurements for each cell population within an array. Due to both the number of cell populations available and the correspondingly large number of individual cells within each cell population, a significant innovation of the present invention is in providing for the summing and amplification of the characteristic optical response signatures of

multiple independent measurements taken from cells within each cell population, thereby improving the detection limit and sensitivity of the biosensor.

An additional innovation of the present invention is that, by deploying a large number of cell populations within the array, and providing a large number of individual cells in each population, the discriminating capabilities of the biosensor array toward biological or chemical analytes is significantly enhanced by providing for thousands of cell responses from a large number of cell populations. This feature directly mimics the actual behavior of the human olfactory system where the combined signals from thousands of receptor cells, in each grouping of nearly a thousand different receptor cell types found in the epithelium layer, none of which are particularly sensitive in themselves, lead to a highly amplified sensory response to odors [see Kaufer, et al, *Trends Neurosci.* 14:79(1991)]. One embodiment of the present invention thus mimics the evolutionary scent amplification process found in the human olfactory system in order to significantly enhance biosensor array sensitivity to analytes by summing the low-level responses of a large number of cells in the biosensor array. By summing the responses from a number of cells at low analyte concentrations, a substantial improvement in signal-to-noise ratio can be achieved and a corresponding reduction in the detection limit of the biosensor array is obtained.

A unique feature of the biosensor array of the present invention is that each of the individual cells and cell populations in the array may be encoded for maintaining cell type identity and location where randomly mixed populations of cells are employed. Cells may be encoded prior to disposing them in the microwells or, alternatively, following placement in the microwells. The invention provides for either encoding randomly mixed individual cells and cell populations with a fluorophoric or chromophoric dye compound or, alternatively, using self-encoded cells which are either naturally fluorescing or genetically engineered to fluoresce. Although cell populations may be randomly mixed together, this innovative feature provides for the identity and location of each cell type to be determined via a characteristic optical response signature when the cell array is either illuminated by excitation light energy or, alternatively, subjected to biological stimuli.

In one embodiment, cells or cell populations may be self-encoded by selecting cell populations, such as green fluorescent protein mutants, which exhibit either chemiluminescence, bioluminescence, or whose optical response to biological stimuli yield a unique detectable fluorescence signal. Other cell populations may be employed where cells within a population yield a

unique temporal optical response to stimuli. Either naturally occurring or genetically engineered cell lines may be utilized.

In various alternative embodiments, cells may be encoded with dye compounds which are attached to cells, taken up by cells or provided in the local cell environment. Examples of useful encoding dyes include fluorophores, chromophores, stains or a dye compounds. For example, conventional cell fluorophore probes such as fluoresceins, rhodamines, naphthalimides, phycobiliproteins, nitrobenzoxadiazole may be utilized. A particularly useful reference for selecting appropriate encoding dyes is R.P. Haugland, *Handbook of Fluorescent Probes and Research Chemicals* (6<sup>th</sup> ed.), Molecular Probes Inc.(Eugene, OR, 1996) which is herein incorporated by this reference.

When dye compounds are employed for encoding, cell populations within the biosensor array may be readily decoded by exciting the array with excitation light and indexing cells types within randomly dispersed populations by their response to excitation. In one embodiment, a single fluorophoric or chromophoric material or dye is used for encoding the cells. In an alternative embodiment, two or more encoding materials or dyes may be used to encode cell populations and the optical response intensity ratios for the dyes, produced by exposure to excitation light energy, are employed to encode and identify members of the cell population with the array. In an alternative embodiment, cells may be decoded by excitation light when exposed to a common analyte. In another embodiment, encoded cells may be decoded by their response to a generic cell activator using either a pH or  $\text{Ca}^{+2}$  indicator.

The innovative cell encoding feature of the present invention overcomes certain limitations of prior art devices by eliminating the need for mechanically scanning the array, mechanically indexing the location of cells, and mechanically positioning the array for measurements of individual cells within the array. The invention thus provides for rapid, simultaneous measurements of all cells and cell populations within the array without the need to mechanically scan the array to acquire a series of sequential measurements for each cell. Thus monitoring and measuring the responses of all cells in the array occurs simultaneously without a prolonged delay between the first cell measurement and last cell measurement. The ability to measure all cell responses simultaneously thus provides for the capability to monitor both short term cell response and long term cell response. This innovative feature thus enables the monitoring of rapid biologically significant cell processes and cell responses

on a short time scale. In addition, the ability to simultaneously measure cell responses over a short time scale enables the measurement of individual cell and cell population response rates to changes in the biosensor array environment. This feature thus provides for additional discriminating response information which is useful for detecting biological or chemical analytes.

5           The biosensor array of the present invention can employ either naturally occurring cells and cell populations or genetically engineered cell lines. Virtually any cell type and size can be accommodated by matching the cell size to individual optical fiber optic core diameters and etching conditions. In one embodiment, NIH 3T3 mouse fibroblast cells were employed. In alternative  
10       embodiments, other cells types such as *e. coli* bacteria, staphylococcus bacteria, myoblast precursors to skeletal muscle cells, neutrophil white blood cells, lymphocyte white blood cells, erythroblast red blood cells, osteoblast bone cells, chondrocyte cartilage cells, basophil white blood cells, eosinophil white blood cells, adipocyte fat cells, invertebrate neurons (*Helix aspera*), mammalian neurons, or adrenomedullary cells, may be utilized as well. Any cell type or mixtures of cell population types may also be employed providing the microwell can accommodate the individual cell size.

15           The optical responses of individual cells and cell populations to chemical or biological stimuli are typically interrogated and detected by coupling individual cells with appropriate indicators which may be either fluorophores, chromophores, stains or a dye compounds. For example, conventional cell fluorophore probes such as fluoresceins, rhodamines, naphthalimides, phycobiliproteins, nitrobenzoxadiazole may be utilized. Alternatively, permeant or impermeant cell membrane potential  
20       indicators, ion indicators, reactive oxygen indicators and pH indicators may be employed. A particularly useful reference for selecting appropriate indicators is R.P. Haugland, *Handbook of Fluorescent Probes and Research Chemicals* (6<sup>th</sup> ed.), Molecular Probes Inc.(Eugene, OR, 1996) which is herein incorporated by this reference. Any suitable indicator or combinations of indicators may be utilized provided the indicator does not compromise cell response. In a variety of alternative  
25       embodiments, indicators may be either incorporated directly into the cell, for example by attachment to the cell membrane, by absorption or injection into the cell cytoplasm, or added to the cell external environment, such as a fluid contained within the microwells. In an alternative embodiment, indicators may be attached to the surface of the microwells.

          Individual cells or arrays of cells and cell populations may be optically interrogated and cell  
30       responses to analytes may be measured by conventional optical methods and instrumentation that

are known to those skilled in the art. Cells may be optically interrogated with any suitable excitation light energy source, such as arc lamps, lasers, or light emitting diodes, that are capable of producing light at an appropriate wavelength for exciting dye indicators that may be employed for encoding cell populations or for responding to analytes of interest. The optical responses of individual cells or cell populations may be monitored and measured with any suitable optical detection means, including, but not limited to film or conventional optical detectors, such as photoresistors, photomultiplier tubes, photodiodes, or charge coupled device (CCD) cameras. In a preferred embodiment, CCD cameras are employed to capture fluorescent images of the biosensor array for detecting responses of each cell and various cell subpopulations to analytes. In this embodiment, both individual cell responses and a captured image of the array response may be employed for detecting analytes.

In summary, the biosensor array and sensing method of the present invention offers many distinct advantages in overcoming the limitations of prior art devices. The sensor arrays are easily fabricated from commercially available optical imaging fibers to yield a cost effective, high density, precisely formed, biosensor array without requiring any sophisticated machining or forming process. Since optical fibers and fiber optic arrays are available in a wide variety of fiber core diameters, most cell types and sizes may be accommodated in by the device and method of the present invention. In addition, cells can be readily dispersed into the microwell array in random fashion with no need for physical indexing or scanning to locate individual cells or cell populations due to the innovative cell encoding technique. Sensing methods and sensing systems which employ the biosensor and sensor array of the present invention avoids many of the limitations in manipulating cells encountered with prior art devices. Once cells are placed within the microwells of the array, conventional imaging systems and methods which employ an imaging camera and conventional optics, can monitor the response of thousands of cells simultaneously, eliminating requirements for mechanical scanning mechanisms. Analysis of measurement data is further facilitated by implementing commercially available imaging software to process images of the biosensor array using pattern recognition techniques combined with neural network and other statistical methods.

The biosensor array and sensing method of the present invention may be employed for a number of useful analytical applications where individual cells, which are chemically or biologically stimulated by the presence of a biological or chemical material in the local cell environment, will respond to their environment by producing an optically detectable response either due to the

presence of an appropriate indicator or due to the characteristic optical response of particular cell types which exhibit either natural or genetically-engineered chemiluminescence or bioluminescence. The biosensor array and method of the present invention thus capitalizes on the ability of living cells to respond to biologically significant compounds. Since the selectivity of living cells for such compounds has considerable value and utility in drug screening and analysis of complex biological fluids, the biosensor of the present invention offers distinct advantages to high throughput screening of combinatorial libraries where hundreds of thousands of candidate compounds must be evaluated.

The above and other features of the invention, including various novel details of construction and methods, and other advantages, will now be more particularly described with reference to the accompanying drawings and claims. It will be understood to one skilled in the art that the particular apparatus and method embodying the invention are shown by way of illustration and not as a limitation of the invention. The principles and features of the invention may be employed in various and numerous embodiments without departing from the scope of the invention.

#### BRIEF DESCRIPTION OF THE DRAWINGS

The invention is pointed out with particularity in the appended claims. Other features and benefits of the invention can be more clearly understood with reference to the specification and the accompanying drawings in which:

Fig. 1 is a schematic diagram of the biosensor array concept of the present invention;

Figs. 2a-b are atomic force microscope photomicrographs of a microwell array used in a biosensor array of the present invention;

Fig. 3 is a schematic diagram of the method for depositing cells in microwells used for a biosensor array of the present invention;

Fig. 4 is an SEM photomicrograph of a single NIH 3T3 mouse fibroblast cell in a microwell;

Fig. 5 is a schematic representation of a method for establishing cell viability of cell populations within the biosensor array of the present invention;

Fig. 6 is a characteristic fluorescence image pattern identifying the location of a cells which test positively for cell viability in a biosensor array of the present invention;

Fig. 7 shows the temporal response of the combined fluorescence intensity of the viable cell population identified in Fig. 6;



Fig. 8 is a fluorescence optical image of an encoded cell population within a biosensor array of the present invention;

Fig. 9 is a schematic block diagram of the measurement system used for optical measurements of the microwell sensor array;

5 Fig. 10 is a plot of average BCECF fluorescence for nine biosensor array cells over time; and

Figs. 11a-b compares the viability of cells inserted in microwells both with and without a pretreatment for filling the microwells with culture media.

#### DETAILED DESCRIPTION OF THE PREFERRED EMBODIMENTS

##### 10 A. Fabrication of Microwell Arrays

The present invention provides array compositions comprising at least a first substrate with a surface comprising individual sites. By "array" herein is meant a plurality of cells in an array format; the size of the array will depend on the composition and end use of the array. Arrays containing from about 2 different cells to many millions can be made, with very large fiber optic arrays being possible.

15 Generally, the array will comprise from two to as many as a billion or more, depending on the size of the cells and the substrate, as well as the end use of the array, thus very high density, high density, moderate density, low density and very low density arrays may be made. Preferred ranges for very high density arrays are from about 10,000,000 to about 2,000,000,000 (all numbers herein are per cm<sup>2</sup>), with from about 100,000,000 to about 1,000,000,000 being preferred. High density arrays  
20 range about 100,000 to about 10,000,000, with from about 1,000,000 to about 5,000,000 being particularly preferred. Moderate density arrays range from about 10,000 to about 100,000 being particularly preferred, and from about 20,000 to about 50,000 being especially preferred. Low density arrays are generally less than 10,000, with from about 1,000 to about 5,000 being preferred. Very low density arrays are less than 1,000, with from about 10 to about 1000 being preferred, and from about  
25 100 to about 500 being particularly preferred. In some embodiments, the compositions of the invention may not be in array format; that is, for some embodiments, compositions comprising a single cell may be made as well. In addition, in some arrays, multiple substrates may be used, either of different or identical compositions. Thus for example, large arrays may comprise a plurality of smaller substrates.

In addition, one advantage of the present compositions is that particularly through the use of fiber optic technology, extremely high density arrays can be made. Thus for example, because cells frequently may be 200 fm or less and very small fibers are known, it is possible to have as many as 250,000 or more (in some instances, 1 million) different fibers and cells in a 1 mm<sup>2</sup> fiber optic bundle, with densities of greater than 15,000,000 individual cells and fibers (again, in some instances as many as 25-50 million) per 0.5 cm<sup>2</sup> obtainable.

By "substrate" or "solid support" or other grammatical equivalents herein is meant any material that can be modified to contain discrete individual sites appropriate for the attachment or association of cells and is amenable to at least one detection method. As will be appreciated by those in the art, the number of possible substrates is very large. Possible substrates include, but are not limited to, glass and modified or functionalized glass, plastics (including acrylics, polystyrene and copolymers of styrene and other materials, polypropylene, polyethylene, polybutylene, polyurethanes, Teflon, etc.), polysaccharides, nylon or nitrocellulose, resins, silica or silica-based materials including silicon and modified silicon, carbon, metals, inorganic glasses, plastics, optical fiber bundles, and a variety of other polymers. In general, the substrates allow optical detection and do not themselves appreciably fluoresce.

Generally the substrate is flat (planar), although as will be appreciated by those in the art, other configurations of substrates may be used as well; for example, three dimensional configurations can be used, for example by embedding the cells in a porous block of plastic that allows sample access to the cells and using a confocal microscope for detection. Similarly, the cells may be placed on the inside surface of a tube, for flow-through sample analysis to minimize sample volume. Preferred substrates include optical fiber bundles as discussed below, and flat planar substrates such as glass, polystyrene and other plastics and acrylics.

In a preferred embodiment, the substrate is an optical fiber bundle or array, as is generally described in U.S.S.N.s 08/944,850 and 08/519,062, PCT US98/05025, and PCT US98/09163, all of which are expressly incorporated herein by reference. Preferred embodiments utilize preformed unitary fiber optic arrays. By "preformed unitary fiber optic array" herein is meant an array of discrete individual fiber optic strands that are co-axially disposed and joined along their lengths. The fiber strands are generally individually clad. However, one thing that distinguished a preformed unitary array from other fiber optic formats is that the fibers are not individually physically manipulatable; that

is, one strand generally cannot be physically separated at any point along its length from another fiber strand. In general, the discussion herein is focused on fiber optic arrays, although as will be appreciated by those in the art, other substrates as described above may be used in any embodiment described herein.

5           At least one surface of the substrate is modified to contain discrete, individual sites for later association of cells. These sites may comprise physically altered sites, i.e. physical configurations such as wells or small depressions in the substrate that can retain the cells, such that a cell can rest in the well, or the use of other forces (magnetic or compressive), or chemically altered or active sites, such as biologically or chemically functionalized sites, electrostatically altered sites, hydrophobically/  
10 hydrophilically functionalized sites, spots of adhesive, etc.

The sites may be a pattern, i.e. a regular design or configuration, or randomly distributed. A preferred embodiment utilizes a regular pattern of sites such that the sites may be addressed in the X-Y coordinate plane. "Pattern" in this sense includes a repeating unit cell, preferably one that allows a high density of cells on the substrate. However, it should be noted that these sites may not be  
15 discrete sites. That is, it is possible to use a uniform surface of adhesive or chemical functionalities, for example, that allows the attachment of cells at any position. That is, the surface of the substrate is modified to allow attachment of the cells at individual sites, whether or not those sites are contiguous or non-contiguous with other sites. Thus, the surface of the substrate may be modified such that discrete sites are formed that can only have a single associated cell, or alternatively, the surface of  
20 the substrate is modified and cells may go down anywhere, but they end up at discrete sites.

In a preferred embodiment, the surface of the substrate is modified to contain microwells, i.e. depressions in the surface of the substrate. This may be done as is generally known in the art using a variety of techniques, including, but not limited to, photolithography, stamping techniques, pressing, casting, molding, microetching, electrolytic deposition, chemical or physical vapor deposition  
25 employing masks or templates, electrochemical machining, laser machining or ablation, electron beam machining or ablation, and conventional machining. As will be appreciated by those in the art, the technique used will depend on the composition and shape of the substrate.

In a preferred embodiment, physical alterations are made in a surface of the substrate to produce the sites. In a preferred embodiment, the substrate is a fiber optic bundle and the surface of  
30 the substrate is a terminal end of the fiber bundle, as is generally described in 08/818,199 and

09/151,877, both of which are hereby expressly incorporated by reference. In this embodiment, wells are made in a terminal or distal end of a fiber optic bundle comprising individual fibers. In this embodiment, the cores of the individual fibers are etched, with respect to the cladding, such that small wells or depressions are formed at one end of the fibers. The required depth of the wells will depend on the size of the cells to be added to the wells.

Generally in this embodiment, the cells are non-covalently associated in the wells, although the wells may additionally be biologically or chemically functionalized as is generally described below, cross-linking agents may be used, or a physical barrier may be used, i.e. a film or membrane over the cells.

In a preferred embodiment, the surface of the substrate is modified to contain biologically or chemically modified sites, that can be used to attach, either covalently or non-covalently, the cells of the invention to the discrete sites or locations on the substrate. "Chemically modified sites" in this context includes, but is not limited to, the addition of a pattern of chemical functional groups including amino groups, carboxy groups, oxo groups and thiol groups, that can be used to attach cells which generally also contain corresponding reactive functional groups on their surfaces; the addition of a pattern of adhesive that can be used to bind the cells, (either by prior chemical functionalization for the addition of the adhesive or direct addition of the adhesive); the addition of a pattern of charged groups (similar to the chemical functionalities) for the electrostatic attachment of the cells, i.e. when the cells comprise charged groups opposite to the sites; the addition of a pattern of chemical functional groups that renders the sites differentially hydrophobic or hydrophilic, such that the addition of similarly hydrophobic or hydrophilic cells under suitable experimental conditions will result in association of the cells to the sites on the basis of hydroaffinity. Alternatively, biological modifications include the use of binding ligands or binding partner pairs, including, but not limited to, antigen/antibody pairs, enzyme/substrate or inhibitor pairs, receptor-ligand pairs, carbohydrates and their binding partners (lectins, etc.).

In a preferred embodiment, an array of micrometer-sized wells is created at the distal face of an optical imaging fiber by a selective etching process which takes advantage of the difference in etch rates between core and cladding materials. This process has been previously disclosed by Pantano, et al., *Chem. Mater.* 8:2832 (1996), and Walt, et al., in U.S. Patent Application 08/818,199. The etch

reaction time and conditions are adjusted to achieve desired control over the resultant microwell size and volume. Microwells are thus sized to accommodate a single cell of any desired cell type.

The sensor array design can accommodate a variety of cell sizes and configurations utilizing either commercially available optical fibers and fiber optic arrays or custom made fibers or fiber arrays. The major requirement in selecting candidate fibers or fiber optic arrays for fabricating sensors is that the individual fibers have etchable cores.

In one embodiment, the interior surfaces of the microwells may be coated with a thin film or passivation layer of biologically compatible material, similar to the biological modifications of the substrate as outlined above. For example, materials known to support cell growth or adhesion may be used, including, but not limited to, fibronectin, any number of known polymers including collagen, polylysine and other polyamino acids, polyethylene glycol and polystyrene, growth factors, hormones, cytokines, etc. Similarly, binding ligands as outlined above may be coated onto the surface of the wells. In addition, coatings or films of metals such as a metal such as gold, platinum or palladium may be employed. In an alternative embodiment, an indicator compound, for example, a fluorophore, a chromophore or dye, may be attached to the microwell surface for detecting cell responses to chemical or biological stimulation.

The method of fabricating microwells can be adapted to any fiber size so as to accommodate a wide range of cell sizes for incorporation into appropriately sized microwells. For example, optical fibers having core diameters ranging from 1.6 to 100  $\mu\text{m}$  are commercially available from either Galileo Electro-Optics Corp. (Sturbridge, MA) or Edmund Scientific (Barrington, NJ). In addition, larger sizes are available by custom order. Thus, appropriately sized fibers can be utilized to study such diverse cell sizes as *E. coli*, with a typical cell dimension of 0.7 to 1.5  $\mu\text{m}$ , and mammalian neurons, with a cell dimension of up to 150  $\mu\text{m}$ .

In one embodiment, a fiber optic array, having a 1 mm outer diameter and 7  $\mu\text{m}$  individual fiber core diameters, available from Galileo Electro-Optics Corp. (Sturbridge, MA), was utilized. One end of the fiber optic array was polished using a series of aluminum oxide lapping films 12, 9, 3, 1, 0.3  $\mu\text{m}$  available from Mark V Lab (East Granby, CT). The fibers were then sonicated for approximately 1 minute to remove any residue from the polishing procedure. The etching procedure was performed by submerging the distal face of the fiber at a right angle in 700  $\mu\text{L}$  of a buffered hydrofluoric acid solution, comprising 100  $\mu\text{L}$  hydrofluoric acid (50%), 0.2g ammonium fluoride, and 600  $\mu\text{L}$  of

deionized water, for approximately 65 seconds. The fiber was then rinsed with deionized water and sonicated for 1 minute to remove any salts that may have been formed during the etching procedure. In this embodiment, the etch reaction time was tailored such that the well size was 7 microns in diameter, 3 microns in depth, and approximately 90 fL in volume. Both scanning electron microscopy (SEM) and atomic force microscopy (AFM) may be utilized to characterize etched microwells. In Fig. 2a, a typical microwell array formed by the etching procedure is shown in an AFM photomicrograph (Digital Instruments Nanoscope IIIa, Santa Barbara, Ca). In Fig. 2, an oblique view of the microwell array is provided. As shown in these figures, the microwells formed by this process are extremely uniform due to the uniform characteristic structure of the fiber optic array.

#### B. Selection of Cell Types

Virtually any cell type and size can be accommodated in fabricating the sensor of the present invention by matching the cell size to individual optical fiber optic core diameters. Virtually any naturally occurring or genetically engineered (i.e. containing exogenous nucleic acid) eukaryotic or procaryotic cell type may be used, with plants, invertebrates, bacteria and mammalian cells, including, but not limited to, green fluorescent protein mutants, primate, rodent and human cells and cell lines being preferred, as well as mixtures of cell types.

In one embodiment, NIH 3T3 mouse fibroblast cells were employed. These cells are typically 15-20  $\mu\text{m}$  in size. Other cells types such as *E. coli* bacteria, 1 x 3  $\mu\text{m}$ , staphylococcus bacteria, approximately 1  $\mu\text{m}$ , myoblast precursors to skeletal muscle cells, 15-20  $\mu\text{m}$ , neutrophil white blood cells, 10  $\mu\text{m}$ , lymphocyte white blood cells, 10  $\mu\text{m}$ , erythroblast red blood cells, 5  $\mu\text{m}$ , osteoblast bone cells, 15-20  $\mu\text{m}$ , chondrocyte cartilage cells, 15-20  $\mu\text{m}$ , basophil white blood cells, 10  $\mu\text{m}$ , eosinophil white blood cells, 10  $\mu\text{m}$ , adipocyte fat cells, 20  $\mu\text{m}$ , invertebrate neurons (*Helix aspersa*), 125  $\mu\text{m}$ , mammalian neurons, 4-140  $\mu\text{m}$ , or adrenomedullary cells, 13-16  $\mu\text{m}$ , melanocytes, 20  $\mu\text{m}$ , epithelial cells, 20  $\mu\text{m}$ , or endothelial cells, 15-20  $\mu\text{m}$ , may be utilized as well. Additional other suitable cell types include, but are not limited to, tumor cells of all types (particularly melanoma, myeloid leukemia, carcinomas of the lung, breast, ovaries, colon, kidney, prostate, pancreas and testes), cardiomyocytes, endothelial cells, epithelial cells, lymphocytes (T-cell and B cell), mast cells, eosinophils, vascular intimal cells, hepatocytes, leukocytes including mononuclear leukocytes, stem cells such as haemopoetic, neural, skin, lung, kidney, liver and myocyte stem cells, osteoclasts, chondrocytes and other connective tissue cells, keratinocytes, melanocytes, liver cells, kidney cells,

and adipocytes. Suitable cells also include known research cells, including, but not limited to, Jurkat T cells, NIH3T3 cells, CHO, COS, etc. A particularly useful source of cell lines may be found in *ATCC Cell Lines and Hybridomas* (8<sup>th</sup> ed., 1994), *Bacteria and Bacteriophages* (19<sup>th</sup> ed., 1996), *Yeast* (1995), *Mycology and Botany* (19<sup>th</sup> ed., 1996), and *Protists: Algae and Protozoa* (18<sup>th</sup> ed., 1993), available from American Type Culture Co. (Rockville, MD), all of which are herein incorporated by reference.

#### C. Dispersion of Cells in Microwells

Once the microwell size is tailored to accommodate specific cell sizes, the next step in creating an array of cells is to randomly disperse cells into the microwells. Fig. 3 is a schematic diagram showing the method for dispersing and depositing cells in the microwell array. Cell populations are conventionally cultured with growth media which matches cell needs. Culture media is formulated according to either recipes provided by cell line providers, journal articles or reference texts. A particularly useful reference for media preparation is *ATCC Quality Control Methods for Cell Lines* (2<sup>nd</sup> ed.), American Type Culture Co. (Rockville, MD) which is herein incorporated by reference. After culturing, cells are typically trypsinized using aseptic techniques to remove them from the cell culture dish and suspend them in growth media.

In one embodiment, NIH 3T3 mouse fibroblast cells, available from American Type Culture Collection (Rockville, MD) were utilized. The cells were randomly dispersed into the wells by removing the adhered cells from the culture dish with a proteolytic enzyme, such as Trypsin-EDTA (0.05% Trypsin, 0.53 mM EDTA.4Na), available from ; Gibco BRL (Grand Island, NY), using aseptic techniques and placing the cells into a single-cell suspension in growth media, such as Dulbecco's Modified Eagle Medium with 1% PenicillinStreptomycin, 1% L-Glutamine-200mM, and 10% fetal calf serum, available from Gibco BRL.

To disperse cells into the wells, approximately 1.5 ml of the cell suspension was concentrated by centrifugation at 2000 RPM for 3.5 minutes. The supernatant is drawn off and the centrifuge tube was tapped to resuspend the cells. The cell suspension was then added to a 1.5 mm diameter capillary tube. Prior to adding cells to the microwell array, the end of the fiber optic array which contains the microwells was sonicated under vacuum in cell media for approximately 15 minutes to flush and fill the microwells with media. The microwell end of the fiber was then inserted into the capillary tube and secured in place with a thin strip of laboratory film. The capillary tube/fiber set-up

was then incubated in the vertical position for 1-2 hours allowing the suspended cells to settle into the wells and adhere to the well bottom. The length of time required to fill the microwells is dependent only on the amount of time required for the cells to adhere to the microwell bottom. Excess cells which were not accommodated by a well were wiped away with a cotton swab wet with growth media.

5 Fig. 4 is an SEM photomicrograph of a single cell dispersed in an etched microwell.

Once they are positioned within the microwells, cells typically attach to microwell surfaces within 1-2 hours by protein contact. Cell culture media in the microwells may be periodically replenished by exposing the distal surface of the fiber optic array to fresh media and allowing nutrients to diffuse into the microwell cavities. Typically, cells will divide every twelve to fifteen hours.

10 While the size of the microwells tends to confine individual cells, the array will accommodate limited cell splitting over time. Microwell volume will restrict cell splitting due to the well know cell phenomenon of contact inhibition when cells are touching.

#### D. Establishing Cell Viability

In one embodiment, the cell viability in the wells was investigated using a pH indicator, 2'-7'-bis-(2carboxyethyl)-5-(and-6-)-carboxyfluorescein (BCECF-AM) which has an excitation wavelength of 505 nm and an emission wavelength of 535 nm and is available from Molecular Probes (Eugene, OR). The acetoxymethyl (AM) ester form of BCECF is non-fluorescent in solution. The BCECF-AM is cell membrane permeant and passively enters the cell where, once inside the cell, the lipophilic blocking groups are cleaved by non-specific esterases resulting in an increase in fluorescent intensity.

20 This increase in fluorescent intensity is indicative of the cell viability. Fig. 5 is a schematic representation of one embodiment of a method used for establishing cell viability in a sensor array.

For viability tests, an array of encoded cells previously dispersed in microwells was immersed in a 1  $\mu$ M solution of BCECF-AM for 1 minute. The cell array was removed and rinsed thoroughly to remove any residual dye. Fluorescent images of cell responses were acquired every 30 seconds using a 1.0 second acquisition time to monitor the increase in fluorescent intensity due to the pH of healthy cells. Prior to viability measurements, a cell location template was generated through excitation of the encoded cells, using the encoding method described herein, and the locations of individual cells was superimposed on viability measurement images in order to identify the location of healthy cells within the array. A fluorescence image of the encoded cells is shown in Fig. 6. In Fig. 7,

30 the fluorescent intensity response of the cells indicates a gradual increase as the lipophilic groups are



cleaved from the BCECF-AM dye within the cell. The fluorescent intensity response of the wells which do not contain cells was negligible.

In an alternative embodiment, BCECF-Dextran, available from Molecular Probes, was used for cell viability measurements. A 0.1  $\mu$ M solution of the dye was added to cell media contained within array microwells. BCECF requires excitation at two wavelengths, 490 nm and 440 nm, and the ratio of the emitted light intensity at 530 nm for each wavelength is proportional to pH. This dye is conjugated with a large Dextran group to prevent entry into the cell through the cell membrane. Thus, BCECF-Dextran can monitor decreases in pH within the external cell environment due to cell metabolism. Fig. 10 shows the average response of nine cells over time where the pH of the cell environment gradually decreases due to cell metabolism.

In another embodiment a commercial cell viability assay, LIVE / DEAD<sup>®</sup> from Molecular Probes (Eugene, OR), was employed. This assay provides a two-color fluorescence cell viability assay based on intracellular esterase activity and plasma membrane integrity. Live cells are distinguished by the enzymatic conversion of the cell-permeant non-fluorescent calcein AM to fluorescent calcein, with an excitation wavelength at 495nm and an emission wavelength at 515nm. Dead cells are distinguished by binding ethidium homodimer (EthD-1), with an excitation wavelength at 495nm and an emission wavelength at 635nm, to nucleic acids which is accompanied by a 40-fold increase in fluorescent intensity. EthD-1 is excluded by the intact plasma membranes of living cells. Background fluorescence levels are inherently low with this assay technique because the dyes are virtually non-fluorescent before interacting with cells.

In a typical procedure, a working solution of 2  $\mu$ M calcein AM and 4 $\mu$ M EthD-1 was prepared in serum-free medium. An array of NIH 3T3 mouse fibroblast cells was cultured at the distal face of a microwell array. The proximal face of the imaging fiber was focused on the imaging system. The cell array at the distal face of the imaging fiber was placed in serum-free medium without dye. The cell array was excited at 495nm and emission values from a population of 25 cells were acquired for 300ms at 515nm (Live) and 635nm (Dead). These values serve as background reading for these measurements. The cell array was then placed in the dye solution and the cell array was excited at 495nm and emission values from 25 cells were acquired for 300ms at 515nm (Live) and 635nm (Dead) every minute for 30 minutes. All measurements were performed at room temperature.

Average fluorescent intensity for the live and dead cell wavelengths are plotted versus time after subtracting the background fluorescence measurement at each emission wavelength.

This assay was used to evaluate pretreatment methods for filling the microwells of a biosensor array with culture media prior to inserting cells. By comparing the viability of cells placed in microwells after various treatments, it was determined that, in a preferred embodiment, sonicating the microwell array under vacuum for 15 minutes prior to insertion of cells improves viability by ensuring that the microwells are filled with culture media. In Fig. 11a, the average fluorescent intensity for dead cells and live cells is plotted with time where no pretreatment was utilized. In Fig. 11b, results are plotted for a pretreated microwell array. Comparison of the two figures demonstrates the advantage of prefilling the microwells with culture media prior to cell insertion. In this example, when the microwell array was not sonicated prior to adding the cells the cells displayed immediate cell death. In this example, when the microwells were sonicated under vacuum to fill the arrays with culture media, the cells remained viable for approximately 20 minutes.

#### E. Encoding Cell Populations

A unique feature of the biosensor array of the present invention is that cells within each cell population are individually encoded for maintaining cell identity within the array when randomly mixed populations of cells are employed. Cells may be encoded with a single fluorophore or chromophore dye or ratios of such dyes. Alternatively, cells may be encoded by either injecting a non-toxic fluorescing compound into the cell cytoplasm or by employing natural or genetically-engineered cell lines which exhibit chemiluminescence or bioluminescence, such as green fluorescent protein mutants. Although a plurality of cell populations may be randomly mixed in the biosensor array, the identity and location of each cell type is determined via a characteristic optical response signature when the array is illuminated by excitation light energy. Cells may be encoded prior to disposing them in the microwells or, alternatively, following placement in the microwells. In one embodiment, a single fluorophoric or chromophoric material or dye is used for encoding the cells. In an alternative embodiment, two or more encoding materials or dyes may be used to encode cell populations and the ratio of the optical response light intensity from each material or dye, produced by exposure to excitation light energy, is used to identify the positions of individual cells within the cell population and locate them in the array. In various alternative embodiments, cells may be encoded with dye compounds which are attached to cells, taken up by cells or provided in the local cell environment.

A wide variety of fluorophores, chromophores, stains or a dye compounds may be used for encoding cells. Encoding dyes may be permeant or impermeant to the cell membrane. Impermeant dyes may be conjugated with acetoxymethyl ester to allow take up by cells. In one embodiment, conventional conjugate or reactive cell membrane stains, cell tracers, or cell probes such as fluoresceins, rhodamines, eosins naphthalimides, phycobiliproteins, nitrobenzoxadiazole may be utilized. In other embodiments, cyanine dyes, such as SYTO® (Molecular Probes), amine-reactive dyes, thiol-reactive dyes, lipophilic dyes, and DNA intercalators, such as acridine orange, may be employed. In one embodiment, fluorogenic or chromogenic enzyme substrates may be taken up by the cells, processed by intracellular enzymes, such as glycosidases, phosphatases, luciferase, or chloramphenicol acetyltransferase, and provide encoding for cell populations. In an alternative embodiment, cell organelle dye probes may be employed for encoding. In one embodiment, cell membrane probes such as carbocyanines and lipophilic aminostyris may be utilized for encoding.

By way of example, Tables 1 and 2 provide a partial listing of a various types of dyes and their corresponding excitation and emission wavelengths which have utility for encoding cell populations in sensor arrays of the present invention. In addition, a particularly useful reference for selecting other types of encoding dyes is R.P. Haugland, *Handbook of Fluorescent Probes and Research Chemicals* (6<sup>th</sup> ed.), Molecular Probes Inc.(Eugene, OR, 1996).

Cell encoding eliminates the need for mechanically scanning the array, mechanically indexing the location of cells, and mechanically positioning the array for measurements of individual cells. In addition, by encoding all cells within the array, simultaneous measurements of the entire array are possible since the responses of individual cells are readily associated with a specific cell population type because each cell is encoded. Encoding of cells thus provides for rapid, simultaneous measurements of all cells and cell populations within the array without the need to mechanically scan the array to acquire a series of sequential measurements for each cell. Since monitoring and measuring the responses of all cells in the array occurs simultaneously, without a prolonged delay between the first cell measurement and last cell measurement, the biosensor array of the present invention provides the capability to monitor both short term and long term cell responses to biological stimuli. The biosensor array of the present invention thus has the unique ability for measuring both cell responses and response rates to analytes. This feature provides

TABLE 1

1. Plasma Membrane Stains		
5	PKH22 green fluorochrome	551ex/567em
	PHK67 green fluorochrome	490ex/502em
	PKH26 red fluorochrome	551ex/567em
lipophilic carbocyanines		
10	Dil - orange fluorescence	
	DiO - green fluorescence	
	DiD - red fluorescence	
	FM 1-43 - green fluorescence	510ex/626em
15	FM 4-64 - red fluorescence	515ex/640em
	RH 414 - orange fluorescence	532ex/716em
lipophilic dextrans		
20	tetramethylrhodamine dextrans (10,000 MW)	470ex/500em
	fluorescein dextran (10,000 MW)	495ex/530em
2. Tracker Probes		
Blue 7-amino-4-chloromethyl coumarin 354ex/466em		
25	4-chloromethyl-6,8-difluoro-7-hydroxy coumarin	371ex/464em
	4-chloromethyl-7-hydroxy coumarin	372ex/470em
	Green 5-chloromethyl fluorescein diacetate	492ex/516em
	8-chloromethyl BODIPY	522ex/528em
30	Yellow-Green	
	5-chloromethyleosin diacetate	524ex/544em
Orange		
35	5-(and 6)-(((4-chloromethyl)benzoyl)amino) tetramethylrhodamine	540ex/566em
3. Amine-Reactive Probes		
fluorescein isothiocyanate 494ex/519em		
carboxyfluorescein succinimidyl esters 504ex/529em		
40	carboxyeosin succinimidyl esters	492ex/517em

additional discriminating response information which is useful for detecting biological or chemical analytes of interest.

While a number of encoding dyes and methods are available, in one embodiment, external fluorescent cell membrane labels, PKH67 with an excitation wavelength of 490 nm and an emission wavelength of 502 nm, and PKH26 with an excitation wavelength of 551 nm and an emission wavelength of 567 nm, were utilized. PKH26 and PKH67 are part of a family of dyes manufactured by Zynaxis Cell Science (Malvern, PA), sold under the trademark Zyn-Linker® (Phanos Technologies Inc.), produced by the method of U.S. Patent 5,665,328 to Hogan, et al., and available from Sigma (St. Louis, Mo). In this embodiment, both dyes were applied to suspended fibroblast cells to encode the cells prior to placement in the sensor array. Encoded cells were placed in microwells filled with growth media. The encoded cells were then illuminated with excitation light transmitted through the fiber optic array and the resulting fluorescent emission response of cells was collected through the same fiber and passed to the detection system. Fig. 6 shows a typical fluorescence optical image of a PKH26 encoded cell population in a biosensor array of the present invention. Fig. 8 shows a typical fluorescence image of a PKH67 encoded cell population in a biosensor array. Note that only those microwells containing encoded cells yields a fluorescent signal upon excitation at the encoding dye wavelength.

In a typical encoding procedure, external or internal encoding labels are applied to suspended cell populations prior to placement in the sensor array. In one embodiment, an external label is applied to the cell by first washing the suspended cells with serum-free media and then centrifuging the cells into a loose pellet at 2000 RPM for 5 minutes. The supernatant is drawn off and the centrifuge tube is tapped to resuspend the cells. Approximately 1 mL of Diluent C, available as dye kit from Sigma, was added to the cells and the tube was inverted to mix. Immediately prior to encoding, a solution of  $4 \times 10^{-6}$  M Diluent C dye was prepared. The suspended cells are added to the dye solution, mixed by pipetting the cell/dye solution, and incubated for 5 minutes. To stop the encoding reaction, 2 mL of fetal calf serum was added to the cells, incubated for 1 minute, and then diluted by adding 4 mL growth media. The cells are then centrifuged at 2000 RPM for 10 minutes to remove the cells from the staining solution. The supernatant was drawn off and the cells are transferred to a new tube. Finally, the cells are subjected to a minimum of three washings by adding 10 mL growth media, centrifuging, and resuspending the cells.

Blue Fluorescent and Nonfluorescent Probes		Green Fluorescent Probes		Yellow and Orange Fluorescent Probes		Red Fluorescent Probes	
Cell #	Probe	Cell #	Probe	Cell #	Probe	Cell #	Probe
L-6868	Luciferase †	A-1172	Nonyl acridine orange	D-288	4-Di-1-ASP (DASPMI)	M-7512	MitoTracker Red CMXRos *
		D-273	DIOC(3)	D-308	2-Di-1-ASP (DASPMI)	T-3168	JC-1 ‡
		D-303	DIOC(6)	D-426	DASPEI		
		D-378	DIOC(3) (for plant mitochondria)	M-7510	MitoTracker Orange CMXRos *		
		M-7502	MitoFluor Green	R-634	Rhodamine 6G		
		M-7514	MitoTracker Green FM *	R-648	Rhodamine B, hexyl ester		
		R-302	Rhodamine 123	T-639	Tetramethylrhodamine		
		S-7529	SYTO 18 yeast mitochondrial stain	T-668	Tetramethylrhodamine, methyl ester		
		T-3168	JC-1 ‡	T-669	Tetramethylrhodamine, ethyl ester		
		D-632	Dihydroethidium 123	D-633	Dihydroethidium 6G	M-7513	MitoTracker Red CM-H2XRos *
				D-638	Dihydroethidium bromine		
				M-7511	MitoTracker Orange CM-H2XRos *		
D-1552	DAMP §	L-7526	Lysotracker Green DND-36	D-113	Dansyl cadaverine	L-7528	Lysotracker Red DND-99
H-7599	Hydroxystilbamidine §	L-7542	Lysotracker Green Br	L-7527	Lysotracker Yellow DND-68		
L-7525	Lysotracker Blue DND-224						
L-7537	Lysotracker bodin §						
L-7538	Lysotracker bodin/DNP §						
L-7532	Lysosensor Blue DND-192 †	L-7534	Lysosensor Green DND-153	A-1301	Acridine orange	N-3246	Neutral red
L-7533	Lysosensor Blue DND-1674	L-7535	Lysosensor Green DND-189	L-7545	Lysosensor Yellow Blue DND-160 ‡		
L-7545	Lysosensor Yellow/Blue DND-160 †						
		B-7447	BODIPY FL brefeldin A	B-7449	BODIPY 558/648 brefeldin A		
		D-272	DIOC(3)	D-282	DIOC(3)		
		D-273	DIOC(3)	D-384	DIOC(3)		
				R-648	Rhodamine B, hexyl ester		
				R-634	Rhodamine 6G		
				T-668	Tetramethylrhodamine, methyl ester		
				T-669	Tetramethylrhodamine, ethyl ester		
B-7450	Brefeldin A	B-7447	BODIPY FL brefeldin A	B-7449	BODIPY 558/648 brefeldin A	D-3521	BODIPY FL C <sub>12</sub> -ceramide †
		D-3521	BODIPY FL C <sub>12</sub> -ceramide †			D-7540	BODIPY TR ceramide †
		D-3522	BODIPY FL C <sub>12</sub> -sphingomyelin			D-7546	BODIPY FL Br-C <sub>12</sub> -ceramide †
		D-7546	BODIPY FL Br-C <sub>12</sub> -ceramide †				
		N-1154	NBD C <sub>12</sub> -ceramide				
		N-1524	NBD C <sub>12</sub> -sphingomyelin				

\* Aldehyde-labile probe. † Chemiluminescent probe. ‡ Dual emission spectrum. § Nonfluorescent probe. ¶ Blue fluorescent probe.

To demonstrate the encoding method with PKH26 and PKH67 dyes, encoded NIH 3T3 mouse fibroblast cells were dispersed in microwells in sensor array and the location of encoded cells within the array was determined by excitation of the cells at a wavelength of 551 nm. Upon excitation, the encoded cells form a characteristic, detectable fluorescence pattern within the sensor array where the pattern provides a locational template for cell viability measurements using BCECF and an excitation wavelength of 505 nm. The excitation and emission wavelengths of the PKH26 encoding label and the BCECF-AM dye are sufficiently separated so that there is no interference between the two dyes. Fig. 6 is a characteristic fluorescence image pattern identifying the location of PKH26 encoded cells in the biosensor array. A similar procedure was followed for encoding the mouse fibroblast cells with PKH67 where a corresponding characteristic fluorescence image pattern is shown in Fig. 8.

In addition to encoding individual cell populations with a single unique dye, each cell population within the array may be encoded with unique dye ratios which yield a characteristic fluorescent intensity ratio in a distinct wavelength range. A range of dye ratios may be employed with two or more dye combination for producing a series of encoding ratios useful for identifying a large number of cell populations. The fluorescent intensity ratio, produced by a specific dye ratio which is used for encoding a cell population, can be distinguished by taking the mean intensity minus the background intensity at each emission wavelength and then dividing the two values to obtain the range for that particular ratio.

In one embodiment, two separate populations of NIH 3T3 mouse fibroblast cells were encoded by labeling cell membranes with either a 1:5 or a 5:1 ratio of PKH67 and PKH26 dyes. Each cell population comprised approximately 125 encoded cells. The cell populations were illuminated at 490 nm and 551 nm excitation wavelengths and emitted fluorescent intensity ratios were measured at 502 nm and 567 nm. Measurements of the average intensity ratio for each dye ratio were made over a two day period. The initial average intensity ratio for the 1:5 PKH67/PKH26 ratio was 0.0863 and the ratio for the 5:1 dye ratio was 0.7014. The final average intensity ratio for the 1:5 ratio was 0.2655 and for the 5:1 ratio it was 0.9090 indicating that the ratios are reasonably stable, even where cell splitting has occurred, and that dye ratio encoded cell populations remain distinguishable with time. Thus, dye ratios can provide a useful alternative encoding mechanism for

identifying and locating cell populations which are randomly dispersed on a biosensor array of the present invention.

#### F. Indicator Dyes

The optical responses of individual cells and cell populations to chemical or biological stimuli are typically interrogated and detected by coupling individual cells with appropriate indicators which may be either fluorophores, chromophores, stains or a dye compounds. Any suitable indicator or combinations of indicators may be utilized provided the indicator does not compromise cell response.

For example, conventional cell fluorophore probes such as fluoresceins, rhodamines, naphthalimides, phycobiliproteins, nitrobenzoxadiazole may be utilized. Alternatively, permeant or impermeant cell membrane potential indicators, ion indicators, reactive oxygen indicators and pH indicators may be employed. By way of example a number of indicators which would have particular utility for the biosensor array of the present invention are listed in Tables 3 through 8 together with their characteristic excitation and emission wavelengths. A particularly useful reference for selecting appropriate indicators is R.P. Haugland, *Handbook of Fluorescent Probes and Research Chemicals* (6<sup>th</sup> ed.), Molecular Probes Inc.(Eugene, OR, 1996).

In one embodiment, indicators may be incorporated directly into the cell by attachment to the cell membrane, by absorption into the cell cytoplasm by membrane permeant indicators, or by microinjection into the cell cytoplasm. In an alternative embodiment, ultrafine fluorescing microspheres, such as Molecular Probes FluoSpheres<sup>TM</sup>, are ingested by the cells and are employed as indicators. In another environment, indicators are added to the culture media fluid contained within the microwells. In an alternative embodiment, indicators may be attached to the surface of the microwells by a conventional



PAGE INTENTIONALLY LEFT BLANK

TABLE 3

Parent Fluorophore	pH Range	Typical Measurement
SNAPL indicators	7.2-8.2	Excitation ratio 490/540 nm or emission ratio 540/630 nm
SNARF indicators	7.0-8.0	Emission ratio 580/640 nm
HPTS (pyranine)	7.0-8.0	Excitation ratio 450/405 nm
BCECF	6.5-7.5	Excitation ratio 490/440 nm
Fluoresceins and carboxyfluoresceins	6.0-7.2	Excitation ratio 490/450 nm
Oregon Green dyes	4.2-5.7	Excitation ratio 510/450 nm or excitation ratio 490/440 nm
Rhodols (including NERF dyes)	4.0-6.0	Excitation ratio 514/488 nm or excitation ratio 500/450 nm
LysoSensor probes	3.5-8.0*	Excitation ratio 340/380 nm†

\* Depends on pK<sub>a</sub> of selected probe; see Table 23.2 for pK<sub>a</sub> of each LysoSensor probe. † Applies to L-7545 only. Other LysoSensor probes allow single excitation and emission measurements only; see Table 23.2 for wavelengths.

Table 23.3 Summary of the pH response of our LysoSensor probes.

Cal #	LysoSensor Probe	Abs/Em* (nm)	pK <sub>a</sub> †	Useful pH Range‡
L-7532	LysoSensor Blue DND-192	374/424	7.5	6.5-8.0
L-7533	LysoSensor Blue DND-167	373/425	5.1	4.5-6.0
L-7534	LysoSensor Green DND-153	442/505	7.5	6.5-8.0
L-7535	LysoSensor Green DND-189	443/505	5.2	4.5-6.0
L-7545	LysoSensor Yellow/Blue DND-160	384/540‡ 329/440§	4.2	3.0-5.0

\* Absorption (Abs) and fluorescence emission (Em) maxima, at pH 5; values may vary somewhat in cellular environments. † All pK<sub>a</sub> values were determined *in vitro*; values *in vivo* may vary. ‡ at pH 3; § at pH 7.

Table 23.4 Reductive pH indicator dyes.

pH Indicator	Preferred Reactive Form
BCECF	BCECF (B-1151, see Section 23.2)*
Carboxyfluorescein	5-(and-6)-carboxyfluorescein, succinimidyl ester (C-1311, see Section 1.3)
Cl-NERF	Cl-NERF (C-6831, see Section 23.3)*
Dichlorofluorescein	2',7'-dichlorofluorescein-5-isothiocyanate (D-6078, see Section 1.5)
Dimethylfluorescein	5-(and-6)-carboxy-4',5'-dimethylfluorescein (C-366, see Section 23.2)*
DM-NERF	DM-NERF (D-6830, see Section 23.3)*
Naphthofluorescein	5-(and-6)-carboxynaphthofluorescein, succinimidyl ester (C-653)
Oregon Green 488	Oregon Green 488 carboxylic acid, succinimidyl ester (O-6147, O-6149)
Oregon Green 500	Oregon Green 500 carboxylic acid, succinimidyl ester (O-6136)
Oregon Green 514	Oregon Green 514 carboxylic acid, succinimidyl ester (O-6139)
Rhodol Green	Rhodol Green carboxylic acid, succinimidyl ester (R-6108)
SNAPL-1	5-(and-6)-carboxy SNAPL-1, succinimidyl ester (C-3061)
SNAPL-2	5-(and-6)-carboxy SNAPL-2, succinimidyl ester (C-3062)
SNARF-1	5-(and-6)-carboxy SNARF-1 (C-1270, see Section 23.2)*

\* Carboxylic acids require activation with EDAC/NHS before reaction with amines (see Section 1.1).

main effect of increasing pH, a decrease.

#### Indicator Dextrans for Measuring Near-Neutral pH

BCECF dextrans are important dual-excitation pH indicators conjugates for pH measurements near pH 7.0. As compared to Swiss 3T3 cells labeled with the AM ester of BCECF, cells labeled with BCECF dextran reportedly showed much more stable fluorescent signals, reduced probe compartmentalization and 10-fold more

conjugation to dextrans. However, coupling of pH indicators to these relatively inert polysaccharides changes several other properties of the dyes:

- The conjugates have high water solubility and must be loaded into cells by microinjection, patch-clamp techniques, scrape loading, endocytosis, liposome fusion or comparable techniques (see Table 15.1 in Chapter 15).

TABLE 4

Table 23.3 Molecular Probes: pH indicator dextrans, in order of decreasing pK<sub>a</sub>.

Dye	Cal #	pK <sub>a</sub>	Measurement Wavelengths	Application Notes
SNARF	D-1301, D-1302	-7.8	Excitation ratio 490/540 nm detected at 580 nm Emission ratio 540/610 nm excited at 514 nm	• Acidic form has the higher quantum yield (see Figure 23.7) • Fluorescence increases in acidic organelles
SNARE	D-1303, D-1304	-7.5	Emission ratio 580/640 nm excited at 514 or 485 nm	• Best conjugate for ratiometric emission measurements, with spectra similar to carboxy SNARF 1 (see Figure 23.6)
HPHS	D-1305	-7.0	Excitation ratio 470/580 nm detected at 530 nm	• Spectra of dextran conjugates are significantly shifted to longer wavelengths in free dye
BCECF	D-1878, D-1879, D-1880	-7.0	Excitation ratio 480/510 nm detected at 530 nm	• Best conjugate for ratiometric excitation measurements, with spectra similar to BCECF (see Figure 23.4)
Fluorescein	D-1821, D-1823, D-1844, D-1860, D-1865	-6.4	Excitation ratio 480/510 nm detected at 530 nm	• Fluorescence is strongly quenched upon uptake into acidic organelles (see Figure 23.2B)
Fluorescein and tetramethylrhodamine	D-1890, D-1891	-6.4	Excitation ratio 495/555 nm detected at 580 nm	• Conjugate incorporating both pH sensitive and pH-insensitive fluorescent dyes (see Figure 23.11)
Rhodol Green	D-7148, D-7150	-5.6	Excitation ratio 500/540 nm detected at 570 nm	• High photostability • Most useful below pH 6 (see Figure 23.15)
DM-NERF	D-3319, D-3320	-5.4	Excitation ratio 510/540 nm detected at 540 nm	• Useful at a higher pH than Cl-NERF dextrans (see Figure 23.12)
Oregon Green 488	D-7170, D-7172	-4.7	Excitation ratio 490/440 nm detected at 520 nm	• Good photostability • Optimum pH sensitivity range between that of DM-NERF and Cl-NERF
Oregon Green 514	D-7174, D-7176	-4.7	Excitation ratio 510/540 nm detected at 530 nm	• Excellent photostability • Optimum pH sensitivity range between that of DM-NERF and Cl-NERF (see Figure 23.11)
Cl-NERF	D-3323, D-3325	-3.8	Excitation ratio 510/540 nm detected at 540 nm	• Useful at a lower pH than DM-NERF dextrans (see Figure 23.12)

\* pK<sub>a</sub> values are those determined for the free dyes. Actual values for dextran conjugates may differ by up to 0.2 pH units and may vary between production lots. † Ratiometric emission measurements at 520/540 nm (with excitation at 490 nm) are also possible in principle, however the response may be complicated by fluorescence resonance energy transfer.

TABLE 5

Table 22.1 Summary of fluorescent  $\text{Ca}^{2+}$  indicators available from Molecular Probes

$\text{Ca}^{2+}$ Indicator	Salt *	AM Ester †	Dextran ‡	Mode §	$K_d$ (nM) ¶	Notes
Bis-fura	B-6810			Ex 340/380	370	1
BTC	B-6790	B-6791		Ex 400/480	7000	2
Calcium Green-1	C-3010	C-3011, C-3012	C-6765, C-3713, C-3714, C-6766	Em 530	190	3,4
Calcium Green-2	C-3730	C-3732		Em 535	550	3,5
Calcium Green-5N	C-3737	C-3739		Em 530	14,000	3
Calcium Orange	C-3013	C-3015		Em 575	185	2
Calcium Orange-5N	C-6770	C-6771		Em 580	20,000	2
Calcium Crimson	C-3016	C-3018	C-6824, C-6825	Em 615	185	2
Fura-3	F-1240, F-3715	F-1241, F-1242		Em 525	390	3,4
Fura 2	F-1200, F-6799	F-1201, F-1221, F-1225	F-6764, F-3029, F-3030	Ex 340/380	145	2
Fura Red	F-3019	F-3020, F-3021		Ex 420/480	140	2,6,7
Indo-1	I-1202	I-1203, I-1223, I-1226	I-3032, I-3033	Em 405/485	230	2
Mag-fura-2	M-1290	M-1291, M-1292		Ex 340/380	25,000	2
Mag-fura-5	M-3103	M-3105		Ex 340/380	28,000	2
Mag-indo-1	M-1293	M-1295	M-6907, M-6908	Em 405/485	35,000	2,8
Magnesium Green	M-3733	M-3735		Em 530	6000	3
Oregon Green 488 BAPTA-1	O-6806	O-6807	O-6798, O-6797	Em 520	170	3
Oregon Green 488 BAPTA-2	O-6808	O-6809		Em 520	580	3,9
Oregon Green 488 BAPTA-5N	O-6812	O-6813		Em 520	20,000	3
Quin-2	Q-1287	Q-1288, Q-1289		Em 495	60	2,10
Rhod-2	R-1243	R-1244, R-1245		Em 570	570	2
Texas Red-Calcium Green			C-6800	Em 535/615	370	11

\* Catalog number for cell-impermeant salt. † Catalog number for cell-permeant AM ester. ‡ Catalog number for dextran conjugate. § Measurement wavelengths (in nm), where Ex = Fluorescence excitation and Em = Fluorescence emission. Indicators for which a pair of wavelengths are listed have dual-wavelength ratio-measurement capability. ¶  $\text{Ca}^{2+}$  dissociation constant, measured at Molecular Probes *in vitro* at 22°C in 100 mM KCl, 10 mM MOPS pH 7.2, unless otherwise noted.  $K_d$  values depend on temperature, ionic strength, and other factors, and are usually higher *in vivo*. Because indicator dextrans are intrinsically polydisperse and have variable degrees of substitution, lot-specific  $K_d$  values are printed on vial in most cases.

1. Similar  $\text{Ca}^{2+}$ -dependent fluorescence response to Fura-2 but ~75% greater molar absorptivity. 2. AM ester form is fluorescent (a major potential source of error in  $\text{Ca}^{2+}$  measurements). 3. AM ester form is nonfluorescent. 4. Calcium Green-1 is more fluorescent than Fura-3 in both  $\text{Ca}^{2+}$ -bound and  $\text{Ca}^{2+}$ -free forms. Magnitude of  $\text{Ca}^{2+}$ -dependent fluorescence increase is greater for Fura-3. 5. Larger  $\text{Ca}^{2+}$ -dependent fluorescence increase than Calcium Green-1. 6. Can also be used in combination with Fura-3 for dual-wavelength ratio measurements. Ex = 488 nm, Em = 530/670 nm (Cytometry 17, 115 (1994); Cell Calcium 14, 359 (1993)). 7. Mag-Fura Red has similar spectral properties, with  $K_d$  for  $\text{Ca}^{2+}$  = 17  $\mu\text{M}$ . 8.  $K_d$  determined in 100 mM KCl, 40 mM HEPES, pH 7.0 at 22°C (Biochem Biophys Res Comm 177, 184 (1991)). 9. Larger  $\text{Ca}^{2+}$ -dependent fluorescence increase than Oregon Green 488 BAPTA-1. 10.  $K_d$  determined in 120 mM KCl, 20 mM NaCl, pH 7.05 at 37°C (Meth Enzymol 172, 230 (1989)). 11. This indicator consists of  $\text{Ca}^{2+}$ -sensitive Calcium Green-1 and  $\text{Ca}^{2+}$ -insensitive Texas Red dyes linked to the same dextran.

O<sub>2</sub> Indicators

TABLE 6

1,3-diphenylisobenzofuran - simple oxygen in membranes  
and in cells  
Ab - 409 Em - 476

rubrene

7,10-diphenylanthracene Ab - 391 Em - 405

trans-1-(2'-Methoxyvinyl)pyrene - picomole detection

Ab - 352 Em - 401

Nitrite Indicators

2,3-diaminonaphthalene 10 nM - 10  $\mu$ M detection  
Ab - 340 Em - 377

NO Indicators

luminol Ab - 355 Em - 411

dihydroethadamine - No react w/ superoxide or hydrogen peroxide to produce peroxynitrite anion which oxidizes the dye

Ab - 289 Em - none

Ca<sup>2+</sup> Indicators

Bis-fura 340/380

Calcium Green Em 530 - visible light excitation

Fura 2 340/380 available } ratiometric Ca<sup>2+</sup> indicator

Indo 1 405/485 UV excitable }

Fluo-3 Em 525 } visible light excitation

Rhod-2 Em 570 }

Mg<sup>2+</sup> Indicators

TABLE 7

Mag-Fura-2	340/360	UV excitable
Mag-Fura-5	340/380	
Mag-Indo-1	405/485	
Magnesium Green	475/Em 530	
Magnesium Orange	545ex	

Zn<sup>2+</sup> Indicators

Newport Green	506/535	
T5Q	N-(6-methoxy-8-quinolyl)-p-toluenesulfonamide	
	334/365	
used to localize Zn <sup>2+</sup> pools in the CNS.		

Cu<sup>+</sup> Indicators

Phen Green	442/517	
also detects Fe <sup>2+</sup> , Hg <sup>2+</sup> , Pb <sup>2+</sup> , Cd <sup>2+</sup> , Ni <sup>2+</sup> at submicromolar concentrations		

Na<sup>+</sup> Indicators

SBFI	Ab 339/Em 505	- UV ex
SBFO	354/515	
Sodium Green	506/535	- visible light ex. - employs crown ether.

K<sup>+</sup> Indicators

PBFI	Ab 336/Em 557	
------	---------------	--

Ce<sup>-</sup> Indicators

SPQ	344/443	follow Ce <sup>-</sup> transport w/ ms time resolution
MQAE	350/400	high fluorescence quantum yield

TABLE 8

Fe Oxyburst Green  
Orange 550/574 } detects oxidative burst that occurs in phagocytosis

Dichlorodihydrofluorescein Diacetate - monitors oxidative activity  
em (H<sub>2</sub>DCFDA) 504/529 ex - cell permeant

Dihydrorhodamine 123 - investigates reactive oxygen intermediates  
em 507/529 ex produced by phagocytes. — 3

Fura Red <sup>TM</sup> - calcium indicator - ~~measures oxidative bursts~~  
and calcium fluxes

Dihydroethidium - respiratory burst in phagocytes.  
em 518/605 ex

Aequorin - Bioluminescent Ca<sup>2+</sup> indicator  
em 430/465 ex

silanization treatment for bonding the indicator to the glass surface. In one embodiment, natural or genetically engineered cell lines which exhibit chemiluminescence, bioluminescence, or color changes when stimulated are used alone without need for a separate indicator since they produce intrinsic optical responses. Examples of such cells include green fluorescent protein mutants. In other embodiments, cells which express enzymes are employed with a reagent which enables an optical response, such as the generation of a fluorescent product. For example when luciferase is expressed by a cell in the presence of luciferin, the cell produces a fluorescence response when biologically stimulated.

In alternative embodiments, multiple indicators may be employed within a cell array, within a cell population, or within individual cells so as to provide for simultaneous monitoring of cell responses to a variety of different chemical or biological materials. Where two or more indicators are utilized, dyes with spectral separation of narrow spectral bandwidths are particularly useful, for example Molecular Probes BODIPY™ dyes.

#### G. Optical Measurements

Individual cells and populations of cells within the biosensor array of the present invention may be optically interrogated and cell responses may be monitored by employing conventional optical components known to one of ordinary skill in the art. Where external optical stimulation of cells is required to elicit an optical response, conventional light sources such as arc lamps, photodiodes, or lasers may be employed for excitation light energy. Cell responses may be monitored by conventional detectors such as photomultiplier tubes, photodiodes, photoresistors or charge coupled device (CCD) cameras. Conventional optical train components, such as lenses, filters, beam splitters, dichroics, prisms and mirrors may be employed to convey light to and from such light sources and detectors either to discrete substrate sites or through optical fiber strands to microwells that contain individual cells. The principal requirement for any particular optical apparatus configuration that is employed in optical measurements is that the combination of optical components provide for optically coupling the cells in the array to detectors and light sources. While a particular apparatus configuration that was employed in experimental optical measurements is described below, other configurations may also be employed which are functionally equivalent and appropriate suited for a particular measurement requirement.



The instrumentation used for fluorescence measurements is a modified Olympus (Lake Success, NY) epifluorescence microscope which was converted from a vertical to a horizontal configuration. A schematic diagram of the measurement system 100 is shown in Fig. 9. White light from a 75W xenon lamp 110 is collimated by a condensing lens 112, passed through an excitation filter 120, reflected by a dichroic mirror 130, and focused onto the proximal end 210 of an imaging fiber 200 with a microscope objective 140. A neutral density filter 122 may be employed for adjustment of excitation light intensity. The imaging fiber 200 is precisely positioned by an x-y micropositioner 150, available from Spindler and Hoyer (Milford, MA), and a microscope z-translation stage 152. Excitation light is transmitted through the fiber 200 to the biosensor array 300 at the distal fiber end 212. The emitted fluorescence light from the biosensor array is returned through the fiber 200, through the dichroic mirror 130, filtered through an emission filter 160, and detected by a PXL™ Photometrics (Tucson, AZ) charge coupled device (CCD) camera 170. A magnification lens 165 may be employed if necessary. Data is processed on an Apple Power Macintosh 440 (Sunnyvale, CA) desktop computer 180 using IPLab 3.0 image processing software, commercially available from Signal Analytics (Vienna, VA).

While a bench-top measurement system was utilized for these measurements, in one embodiment, a compact portable measurement system may be assembled from conventional optical and electronic components.

#### H. Biosensor Array Applications

The biosensor, biosensor array, sensing apparatus and sensing method of the present invention can be applied to a large variety of conventional assays for screening and detection purposes. The biosensor may be configured for virtually any assay and offers a distinct advantage for high throughput screening where a plurality of encoded cell populations, which have utility in particular assays or are genetically engineered cell to provide unique responses to analytes, may be employed in a single sensor array for conducting a large number of assays simultaneously on a small sample. The biosensor array thus provides both for tremendous efficiencies in screening large combinatorial libraries and allows conduction of a large number of assays on extremely small sample volumes, such as biologically important molecules synthesized on micron sized beads. The biosensor of the present invention can be applied to virtually any analyte measurements where there is a detectable cell response to the analyte due to biological stimulation.

The biosensor array and method of the present invention utilizes the unique ability of living cell populations to respond to biologically significant compounds in a characteristic and detectable manner. Since the selectivity of living cells for such compounds has considerable value and utility in drug screening and analysis of complex biological fluids, a biosensor which makes use of the unique characteristics of living cell populations offers distinct advantages in high throughput screening of combinatorial libraries where hundreds of thousands of candidate pharmaceutical compounds must be evaluated. In addition, such a biosensor and sensing method can be utilized for either off-line monitoring of bioprocesses or in situ monitoring of environmental pollutants where the enhanced sensitivity of living cells to their local environment can be exploited.

Thus, the present invention provides methods for detecting the responses of individual cells to analytes of interest. By "analyte of interest" or "target analyte" or "candidate bioactive agent" or "candidate drug" or grammatical equivalents herein is meant any molecule, e.g., protein, oligopeptide, small organic molecule, polysaccharide, polynucleotide, etc., to be tested for the ability to directly or indirectly altering a cellular phenotype, including its optical properties. Generally a plurality of assay mixtures are run in parallel with different agent concentrations to obtain a differential response to the various concentrations. Typically, one of these concentrations serves as a negative control, i.e., at zero concentration or below the level of detection.

Analytes encompass numerous chemical classes, though typically they are organic molecules, preferably small organic compounds having a molecular weight of more than 100 and less than about 2,500 daltons. Analytes comprise functional groups necessary for structural interaction with proteins, particularly hydrogen bonding, and typically include at least an amine, carbonyl, hydroxyl or carboxyl group, preferably at least two of the functional chemical groups. The candidate agents often comprise cyclical carbon or heterocyclic structures and/or aromatic or polyaromatic structures substituted with one or more of the above functional groups. Candidate agents are also found among biomolecules including peptides, saccharides, fatty acids, steroids, purines, pyrimidines, derivatives, structural analogs or combinations thereof. Particularly preferred are peptides.

Candidate agents are obtained from a wide variety of sources including libraries of synthetic or natural compounds. For example, numerous means are available for random and directed synthesis of a wide variety of organic compounds and biomolecules, including expression of randomized oligonucleotides. Alternatively, libraries of natural compounds in the form of bacterial,

5 fungal, plant and animal extracts are available or readily produced. Additionally, natural or synthetically produced libraries and compounds are readily modified through conventional chemical, physical and biochemical means. Known pharmacological agents may be subjected to directed or random chemical modifications, such as acylation, alkylation, esterification, amidification to produce structural analogs.

In a preferred embodiment, the candidate bioactive agents are naturally occurring proteins or fragments of naturally occurring proteins. Thus, for example, cellular extracts containing proteins, or random or directed digests of proteinaceous cellular extracts, may be used. In this way libraries of procaryotic and eucaryotic proteins may be made for screening in the methods of the invention.

10 Particularly preferred in this embodiment are libraries of bacterial, fungal, viral, and mammalian proteins, with the latter being preferred, and human proteins being especially preferred.

The peptides may be digests of naturally occurring proteins as is outlined above, random peptides, or "biased" random peptides. By "randomized" or grammatical equivalents herein is meant that each nucleic acid and peptide consists of essentially random nucleotides and amino acids, respectively. Since generally these random peptides (or nucleic acids, discussed below) are chemically synthesized, they may incorporate any nucleotide or amino acid at any position. The synthetic process can be designed to generate randomized proteins or nucleic acids, to allow the formation of all or most of the possible combinations over the length of the sequence, thus forming a library of randomized candidate bioactive proteinaceous agents.

20 In one embodiment, the library is fully randomized, with no sequence preferences or constants at any position. In a preferred embodiment, the library is biased. That is, some positions within the sequence are either held constant, or are selected from a limited number of possibilities. For example, in a preferred embodiment, the nucleotides or amino acid residues are randomized within a defined class, for example, of hydrophobic amino acids, hydrophilic residues, sterically biased (either small or large) residues, towards the creation of nucleic acid binding domains, the creation of cysteines, for cross-linking, prolines for SH-3 domains, serines, threonines, tyrosines or histidines for phosphorylation sites, etc., or to purines, etc.

25 As described above generally for proteins, nucleic acid candidate bioactive agents may be naturally occurring nucleic acids, random nucleic acids, or "biased" random nucleic acids. For example, digests of procaryotic or eucaryotic genomes may be used as is outlined above for proteins.

"Nucleic acids" in this context includes both DNA and RNA, and nucleic acid analogs including PNA. In a preferred embodiment, the candidate bioactive agents are organic chemical moieties, a wide variety of which are available in the literature.

While the examples below provide a variety of specific assays which may be useful in configuring and employing the biosensor array and method of the present invention, they are not intended to limit either the scope of applications envisioned or the broad range of sensing methods which can be employed with a plurality of cell populations with the biosensor of the present invention.

In one embodiment, the biosensor array can be employed for remotely monitoring redox states of individual cells or cell populations in bioprocesses. For example, NADH dependent fluorescence can be measured in bacteria, fungi, plant or animal cells. NAD(P) /NAD(P)H can be measured to monitor changes from aerobic to anaerobic metabolism in fermentation processes using the method disclosed by Luong, et al., in Practical Fluorescence, G. Guilbault ed., Marcel Dekker (New York, 1990).

Alternatively, the biosensor array may be employed for in situ monitoring of cellular processes in response to environmental contaminants by incorporating the method disclosed by Hughes, et al., *Analytica Chimica Acta* 307:393(1995) to provide for distinguishable cell population responses within an array. In this method, micron-sized spheres, impregnated with a fluorophore and modified on the surface with a fluorogenic enzyme probe, are ingested by cells and enzymatic activity occurs at the sphere surface, producing a detectable fluorescent signal.

In yet another embodiment, the biosensor array can be employed with genetically engineered bioluminescent bacteria for in situ monitoring and optical sensing of metallic compounds. For example, cell population responses to antimonite and arsenite may be utilized by incorporating the method disclosed in Ramanathan, et al., *Anal Chem.* 69:3380(1997) into cell populations within the biosensor array. With this method, cell plasmid regulates the expression of bacterial luciferase depending on the metal concentration.

In another embodiment, the cell populations within the biosensor array can be encoded with ATP dependent luminescent proteins, for example firefly luciferase, which are injected into rat hepatocytes for pathological studies according to the method disclosed by Koop, et al., *Biochem. J.* 295:165(1993). These cells exhibit a decrease in cytoplasmic ATP when exposed to pathological insults and changes in fluorescence directly relate to the extent of metabolic poisoning in the cell.

In one embodiment, the cell populations within the biosensor array can be encoded with green fluorescent protein [see T. Gura, *Science* 276:1989(1997); Niswender, et al., *J. Microscopy* 180(2):109(1995); Cubitt, et al., *TIBS* 20:448(1995); Miyawaki, et al., *Nature* 388:882(1997)]. Several genetically-engineered mutants of GFP are available which have distinguishable fluorescence emission wavelengths. These proteins have additional utility as fluorescing indicators of gene expression and  $Ca^{+}$  levels within cells.

In an additional embodiment, the biosensor array can be used in measurements of cell proliferation by in situ monitoring of calcium levels and calcium oscillations in single cells using fluorescent markers, such as aequorin or fura-2, according to the method disclosed by Cobbold, et al., *Cell Biology* 1:311(1990).

As will be appreciated by those in the art, the assays of the invention may be run in a wide variety of ways and for a wide variety of purposes. For example, the cells may be used as a detection system for a particular analyte; the cells undergo a characteristic optically detectable change in the presence of a particular analyte. Alternatively, the cells may be used to screen drug candidate libraries for the ability to alter a cellular phenotype that is optically detectable. For example, the expression of a therapeutically relevant cell surface receptor may be increased such that the receptor can now bind a fluorescent ligand; similarly a therapeutically relevant enzyme may now be activated such that a fluorescent reaction product is generated. In this way any modulation, including both increases and decreases, may be monitored. Similarly, the use of reporter genes such as green fluorescent proteins and derivatives thereof facilitates high throughput screening for relevant analyte interactions, through the use of inducible promoters, for example.

Generally, in a preferred embodiment, a candidate bioactive agent is added to the cells prior to analysis, and the cells allowed to incubate for some period of time. By "administration" or "contacting" herein is meant that the candidate agent is added to the cells in such a manner as to allow the agent to act upon the cell, whether by uptake and intracellular action, or by action at the cell surface. In some embodiments, nucleic acid encoding a proteinaceous candidate agent (i.e. a peptide) may be put into a viral construct such as a retroviral construct and added to the cell, such that expression of the peptide agent is accomplished; see PCT US97/01019, hereby expressly incorporated by reference.

Once the candidate agent has been administered to the cells, the cells can be washed if desired and are allowed to incubate under preferably physiological conditions for some period of time.

The reactions outlined herein may be accomplished in a variety of ways, as will be appreciated by those in the art. Components of the reaction may be added simultaneously, or sequentially, in any order. In addition, the reaction may include a variety of other reagents may be included in the assays. These include reagents like salts, buffers, neutral proteins, e.g. albumin, detergents, etc which may be used to facilitate optimal detection, and/or reduce non-specific or background interactions. Also reagents that otherwise improve the efficiency of the assay, such as protease inhibitors, nuclease inhibitors, anti-microbial agents, etc., may be used.

In general, at least one component of the assay is labeled. By "labeled" herein is meant that the compound is either directly or indirectly labeled with a label which provides a detectable signal, e.g. radioisotope, fluorescers, enzyme, antibodies, particles such as magnetic particles, chemiluminescers, or specific binding molecules, etc. Specific binding molecules include pairs, such as biotin and streptavidin, digoxin and antidigoxin etc. For the specific binding members, the complementary member would normally be labeled with a molecule which provides for detection, in accordance with known procedures, as outlined above. The label can directly or indirectly provide a detectable signal.

Once the assay is run, the data is analyzed to determine the experimental outcome, i.e. either the presence or absence of a target analyte, the effect of a candidate agent on a cellular phenotype, etc. This is generally done using a computer.

In this way, bioactive agents are identified. Compounds with pharmacological activity are able to alter a cellular phenotype. The compounds having the desired pharmacological activity may be administered in a physiologically acceptable carrier to a host, as previously described. The agents may be administered in a variety of ways, orally, parenterally e.g., subcutaneously, intraperitoneally, intravascularly, etc. Depending upon the manner of introduction, the compounds may be formulated in a variety of ways. The concentration of therapeutically active compound in the formulation may vary from about 0.1-100 wt. %.

The pharmaceutical compositions can be prepared in various forms, such as granules, tablets, pills, suppositories, capsules, suspensions, salves, lotions and the like. Pharmaceutical grade organic or inorganic carriers and/or diluents suitable for oral and topical use can be used to make up

compositions containing the therapeutically-active compounds. Diluents known to the art include aqueous media, vegetable and animal oils and fats. Stabilizing agents, wetting and emulsifying agents, salts for varying the osmotic pressure or buffers for securing an adequate pH value, and skin penetration enhancers can be used as auxiliary agents.

- 5        While this invention has been particularly shown and described with references to preferred embodiments thereof, it will be understood by those skilled in the art that various changes in form and details may be made therein without departing from the spirit and scope of the invention as defined by the appended claims.

## CLAIMS

1. A biosensor for detecting the response of individual cells to at least one analyte of interest comprising:

- 5           a) a substrate comprising a plurality of discrete sites; and  
          b) a plurality of cells each dispersed at one of said discrete sites, wherein each cell is encoded with at least one optically interrogatable material.

2. The biosensor of claim 1 wherein said substrate comprises a fiber optic array comprising a  
10   plurality of fibers, each fiber having a distal end and a proximal end, and said discrete sites comprise a plurality of microwells each formed on an end surface of said distal end, and each one of said plurality of cells is dispersed in one of said microwells, wherein each of said cells is optically coupled and in optical  
communication with a distal end of at least one of said fibers in said array.

15   3. The biosensor of claims 1 or 2 wherein said sites have an internal diameter ranging from about 1  $\mu\text{m}$  to about 200  $\mu\text{m}$ , a depth ranging from about 0.25  $\mu\text{m}$  to about 200  $\mu\text{m}$ , and a volume ranging from about 1 fL to about 5 nanoliters.

20   4. The biosensor of claims 2, or 3 wherein said fibers further comprise a fiber core having a diameter ranging from about 1  $\mu\text{m}$  to about 200  $\mu\text{m}$ .

5. The biosensor of claims 1, 2, 3 or 4 wherein a surface of said sites are coated with a biologically compatible material.

25   6. The biosensor of claims 1, 2, 3, 4, or 5 wherein an indicator compound is attached or inserted into at least one of said cells.

7. The biosensor of claims 1, 2, 3, 4, 5, or 6 wherein said plurality of cells comprises at least two cell  
30   populations.



8. The biosensor of claim 7 wherein each cell population is encoded with at least one optically interrogatable materials selected from the group consisting of a dye, a fluorophore, a chromophore, a chemiluminescent compound and a bioluminescent compound.

5

9. An apparatus for detecting the response of individual cells to at least one analyte of interest comprising:

a) a biosensor array comprising:

i) a substrate comprising a plurality of discrete sites; and

10 ii) a plurality of cells each dispersed at one of said discrete sites, wherein each cell is encoded with at least one optically interrogatable material.

b) a detector means optically coupled to and in optical communication with said discrete sites on said substrate, said detector means capable of detecting an optical response of said cells dispersed in said discrete sites to an analyte.

15

10. The apparatus of claim 9 wherein

said substrate comprises a fiber optic array comprising a plurality of fibers, each fiber having a distal end and a proximal end;

20 said discrete sites comprise a plurality of microwells each formed on an end surface of said distal end of said fibers;

each one of said plurality of cells is dispersed in one of said microwells; and

said detector means is optically coupled to and in optical communication with a proximal end of said fibers for detecting an optical response of said cells at said distal fiber ends.

25 11. An apparatus according to claims 9 or 10, further comprising an excitation light energy means coupled to an end of said fibers.

12. An apparatus according to claims 9, 10 or 11 further comprising an image capturing means for capturing images of detected optical responses from a plurality of said cells.

30

13. The apparatus of claim 12 wherein said image capturing means comprises a charge coupled device or CCD camera.

14. A method for detecting the response of individual cells to at least one

5 analyte of interest comprising:

a) providing a biosensor array comprising:

i) a substrate comprising a plurality of discrete sites; and

ii) a plurality of cells each dispersed at one of said discrete sites, wherein each cell is encoded with at least one optically interrogatable material.

10 b) contacting said biosensor array with an analyte of interest; and

c) detecting an optical response of said cells.

15. The method of claim 14 wherein

a) said providing a biosensor array comprises:

15 i) a substrate comprising a fiber optic array comprising a plurality of fibers, each fiber having a distal end and a proximal end;

ii) said discrete sites comprise a plurality of microwells each formed on an end surface of said distal end of said fibers;

20 iii) each one of said plurality of cells is dispersed in one of said microwells; and

b) said detecting comprises providing a detecting means optically coupled to and in optical communication with a proximal end of said fibers for detecting an optical response of said cells at said distal fiber ends.

25 16. A method according to claims 14 or 15 wherein said analyte of interest comprises an optically detectable label.

17. A method according to claims 14, 15, or 16 wherein said biosensor is contacted with a plurality of analytes.

30

18. A method of making a biosensor array for detecting the response of individual cells to at least one analyte of interest comprising:

a) providing a substrate comprising a plurality of discrete sites; and

b) contacting said substrate with a plurality of cells such that each cell is dispersed at one of said discrete sites.

19. A method according to claim 18 wherein

a) said providing a substrate comprises a fiber optic array comprising

i) a plurality of fibers, each fiber having a distal end and a proximal end; and

ii) a plurality of microwells each formed on an end surface of said distal end; and

b) said contacting comprises contacting said fiber optic array with a plurality of cells such that each cell is inserted into one of said microwells.

20. A method according to claims 18 or 19 wherein said plurality of cells comprises at least two cell populations.

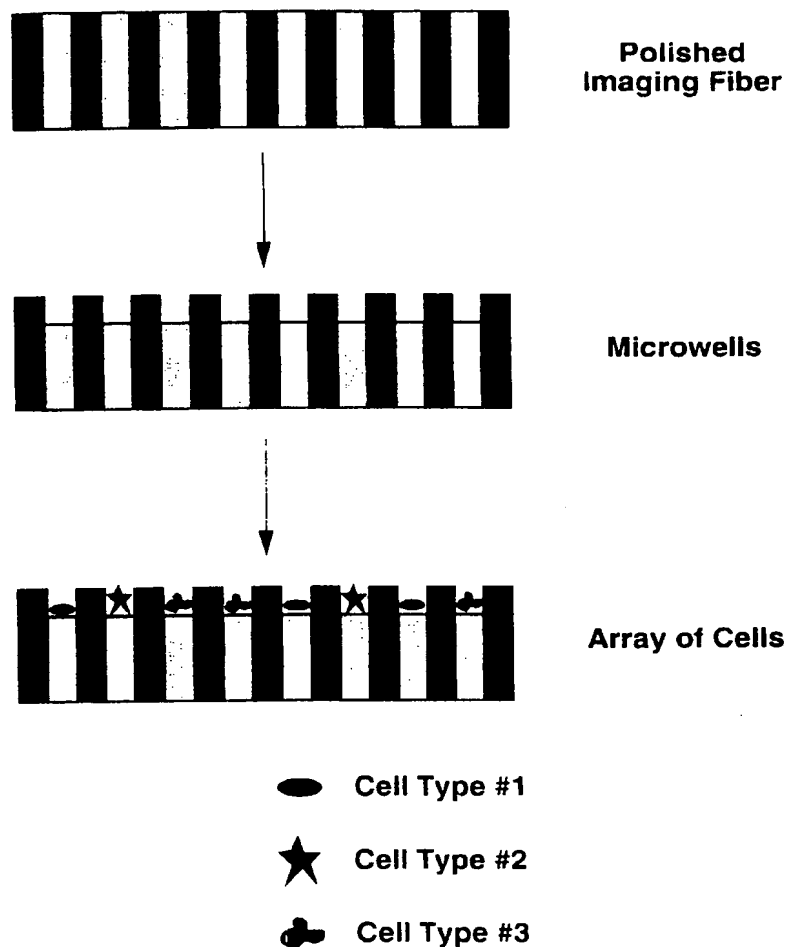
21. A method according to claim 18, 19, or 20 wherein each cell population is

encoded with at least one optically interrogatable material selected from the group consisting of a dye, a fluorophore, a chromophore, a chemiluminescent compound and a bioluminescent compound.

22. A method according to claim 21 further comprising indexing the location of individual cells in said array by emitted light energy produced by illuminating said encoded cells with excitation light energy.

Fig. 1

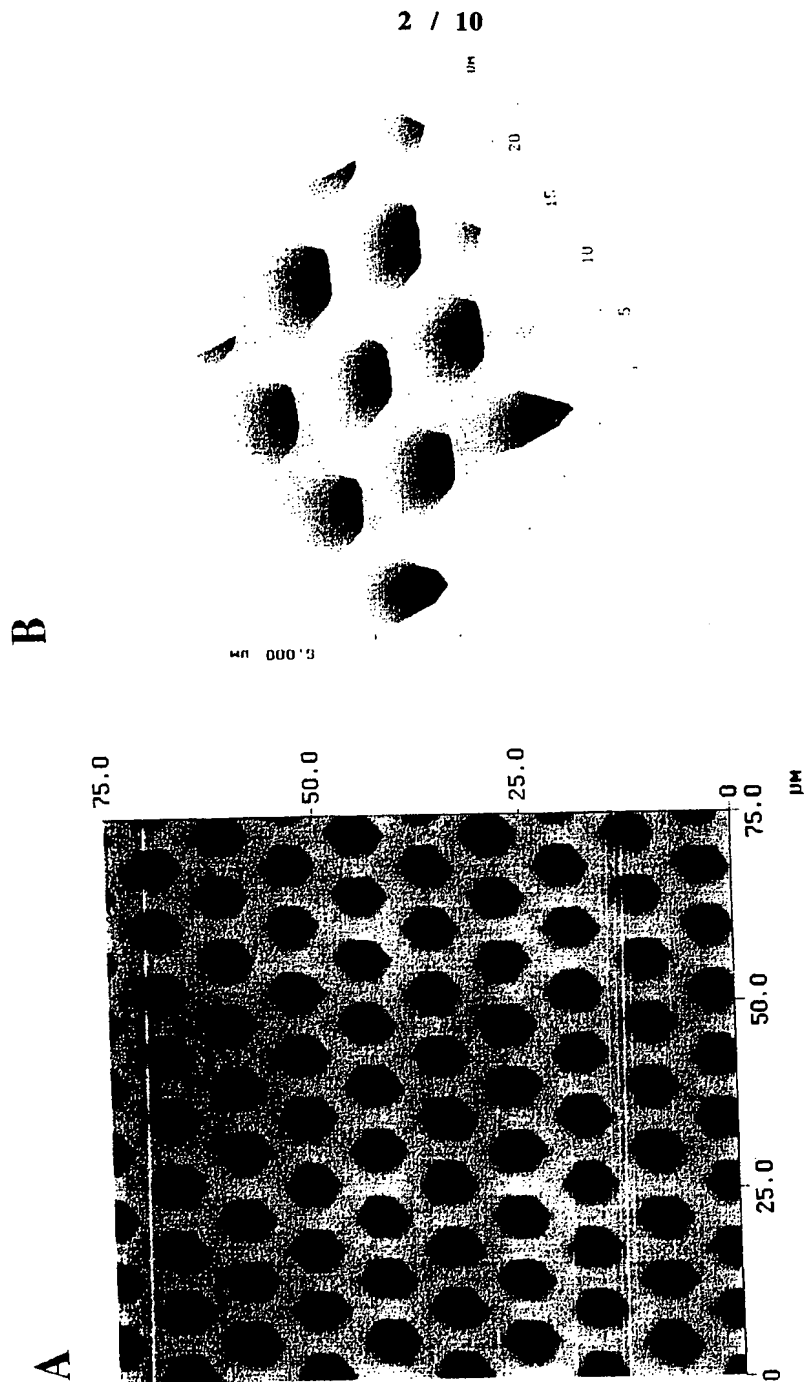
## Cells in Wells Concept



Schematic concept of an optical sensor array of cultured cells. A polished optical imaging fiber is chemically etched to produce an array of micron-sized wells at the distal face of the fiber. Cells suspended in media above the array of wells settle into the wells and adhere to the well bottom. The wells are etched such that each well accommodates one cell. Differences in core diameters and etch times can accommodate a wide variety of cell types and sizes.

# Fiber Optic Microwell Array

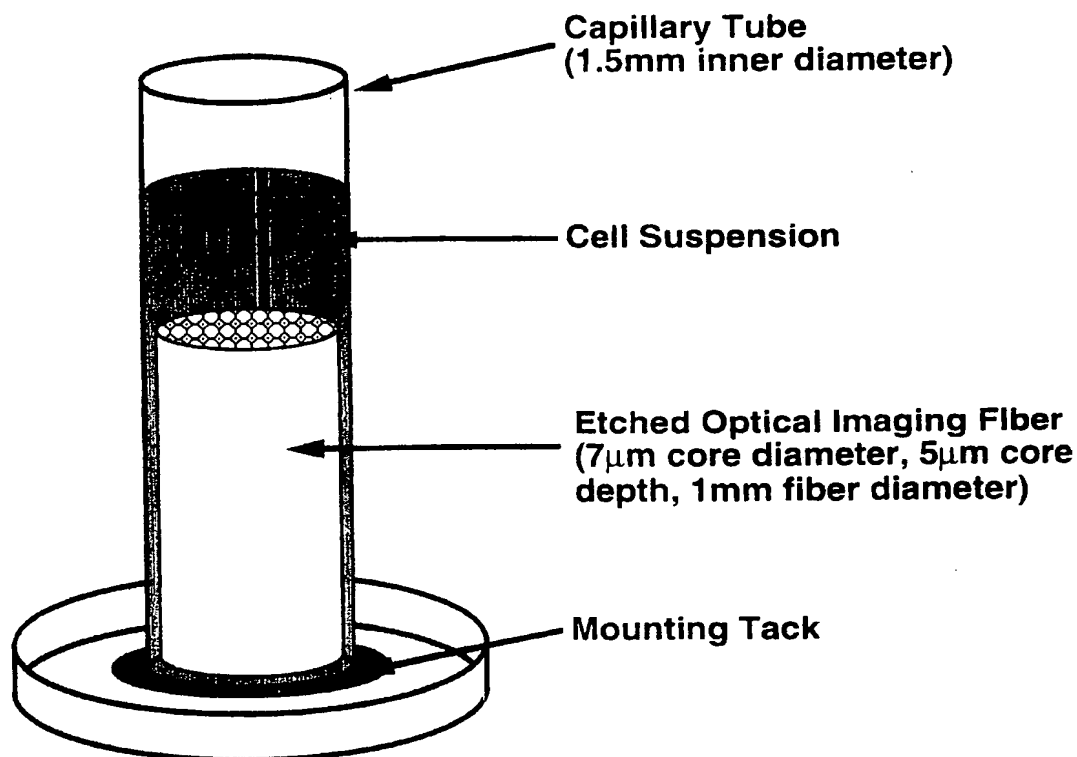
Figs 2a-b



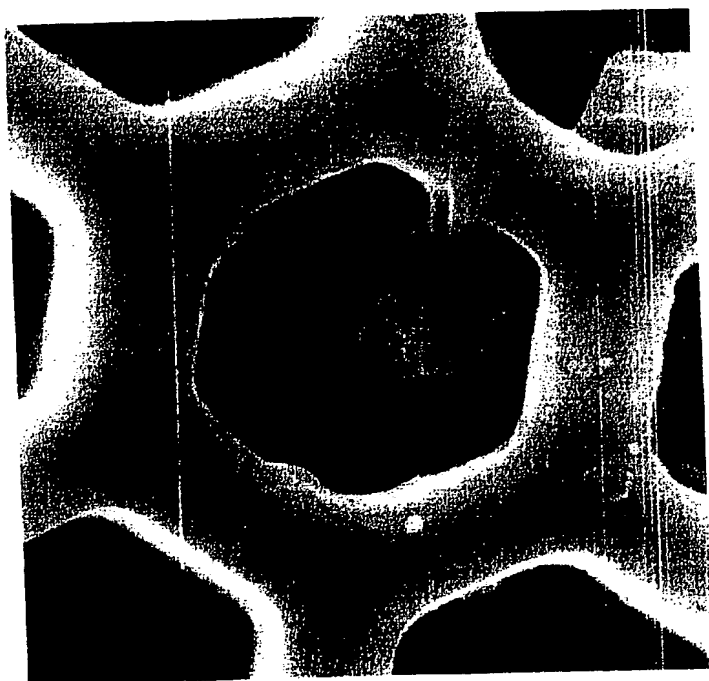
Atomic Force Micrograph (AFM) images of an (A) 75µm x 75µm 2-D array and a (B) 25µm x 25µm 3-D array of etched microwells. An array of micron-sized wells is formed at the distal tip of an optical imaging fiber by a wet-etch process that takes advantage of differences in core and clad etch rates.

## Cells in Wells Set-up

Fig. 3



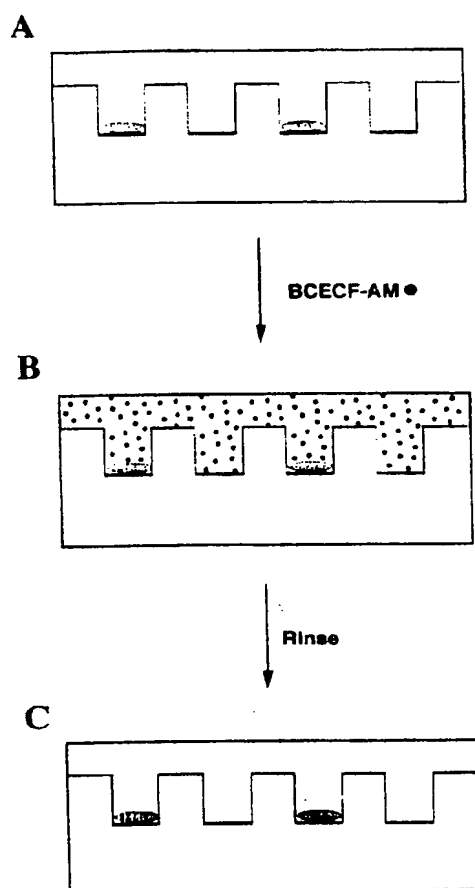
Cells are deposited into wells at the distal face of an optical imaging fiber. Cells are trypsinized using aseptic technique to remove them from the cell culture dish and suspended in growth media. A portion of the cell suspension is concentrated using centrifugation and added to a 1.5mm diameter capillary tube. The etched face of the fiber is inserted into the tube and secured in place with a thin strip of laboratory film. The tube/fiber set-up is then incubated in the vertical position for 12-15 hours for cell adhesion to occur.



Scanning Electron Micrograph (SEM) of a single NIH 3T3 mouse fibroblast cell in an etched microwell. Each well has a diameter of 7 $\mu$ m, a depth of 5 $\mu$ m, and a volume of  $\sim$ 145 fL.

Fig. 4

Fig. 5

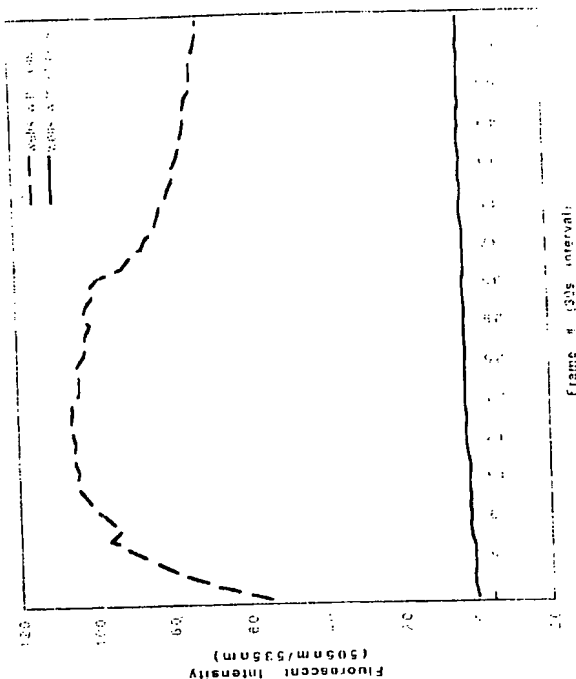


Schematic representation of the response of cells adhered in wells to the acetoxymethyl (AM) ester form of the fluorescein derivative, bis-carboxyethyl bis-carboxy fluorescein (BCECF). The array of cells (A) is incubated in a solution of BCECF-AM (B) and then rinsed thoroughly. The non-fluorescent BCECF-AM passively enters the cell. Once inside the cell, the lipophilic blocking groups are cleaved by the non-specific esterases resulting in an increase in fluorescent intensity (C).



Fig. 7

Average Response of 15 Cells  
to 0.001  $\mu$ M BCECF-AM  
(after 1 minute incubation)



PKH26 Labeled NIH 3T3  
Mouse Fibroblast Cells  
(551nm / 567nm)

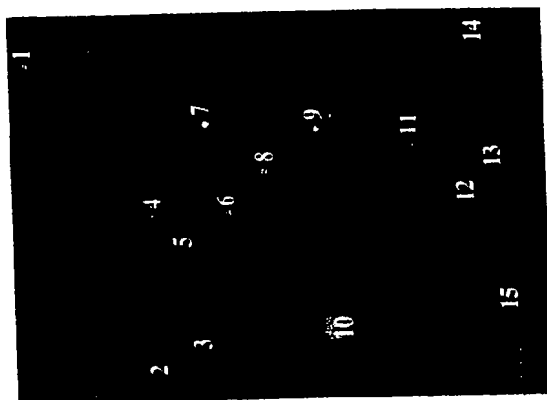
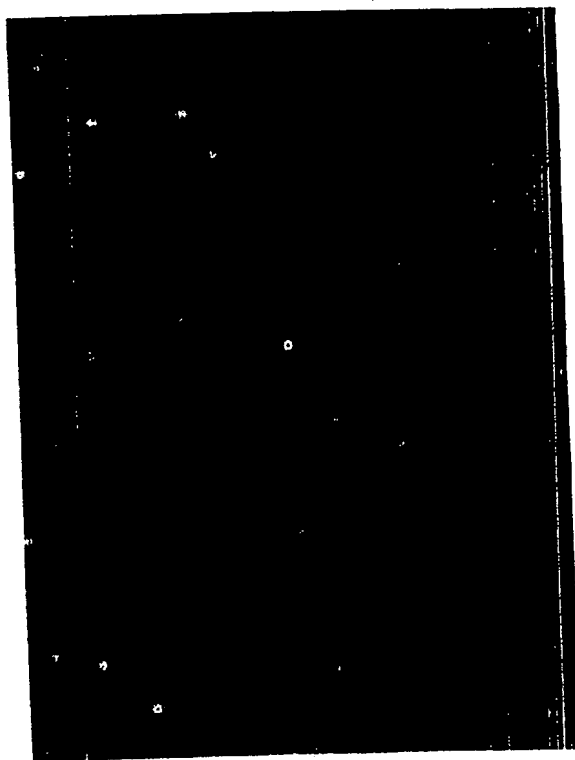


Fig. 6

Fluorescently labeled (551ex, 567em) NIH 3T3 mouse fibroblast cells were deposited in wells at the distal face of an optical imaging fiber. The location of the adhered cells is pin-pointed by exciting at a wavelength compatible with the cell label. The fifteen cells within the designated region of interest form a characteristic pattern which will act as a locational template for fluorescence measurements at the excitation wavelength of BCECF (505ex, 535em).

An array of adhered cells in wells was immersed in a 0.001mM solution of BCECF-AM, prepared in serum-free media, for 1 minute. The cell array was removed and rinsed thoroughly with serum-free media to remove any residual dye. Fluorescent images (lex 505 nm, len 535 nm) were acquired every 30 seconds using a 1.0 second acquisition time. The locational template generated by the fluorescent cell label was transferred to the measurement images in order to locate wells which contain cells. The fluorescent intensity response of the cells shows a gradual increase as the hydrophilic groups are cleaved from the BCECF-AM dye within the cell. The fluorescent intensity response of the wells which do not contain cells is negligible.

Fig. 8



- 7 $\mu$ m core diameter
- 5 $\mu$ m core depth
- 145 fL well volume

Fluorescently labeled (lex 490 nm, lem 502 nm) NIH 3T3 mouse fibroblast cells were cultured in wells etched at the distal face of a 1mm diameter optical imaging fiber. Excess cells (those not accommodated by a well) were wiped away with a cotton swab wet with growth media. The cells were then excited through the fiber. Cell packing densities can be obtained on the order of  $\sim 10^6$ .

# Instrumentation: Modified Fluorescence Microscope

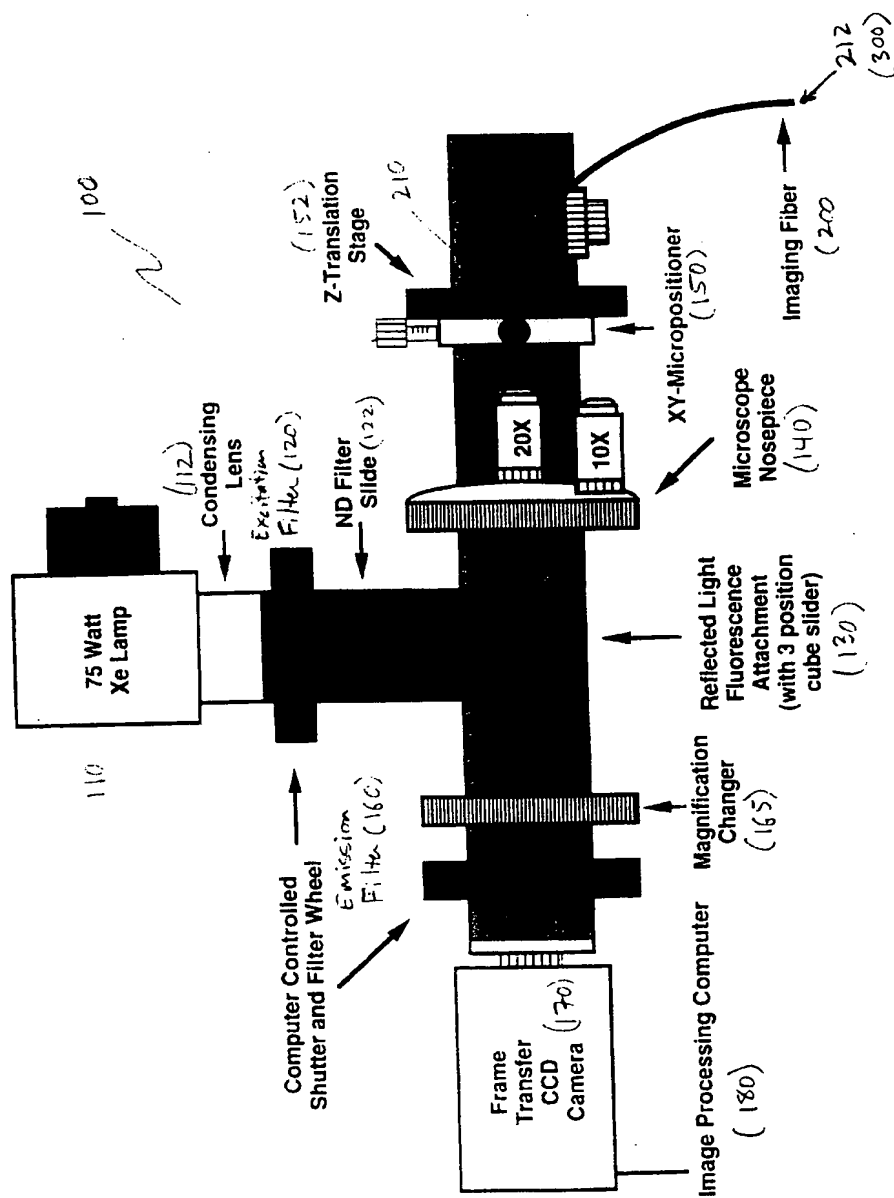
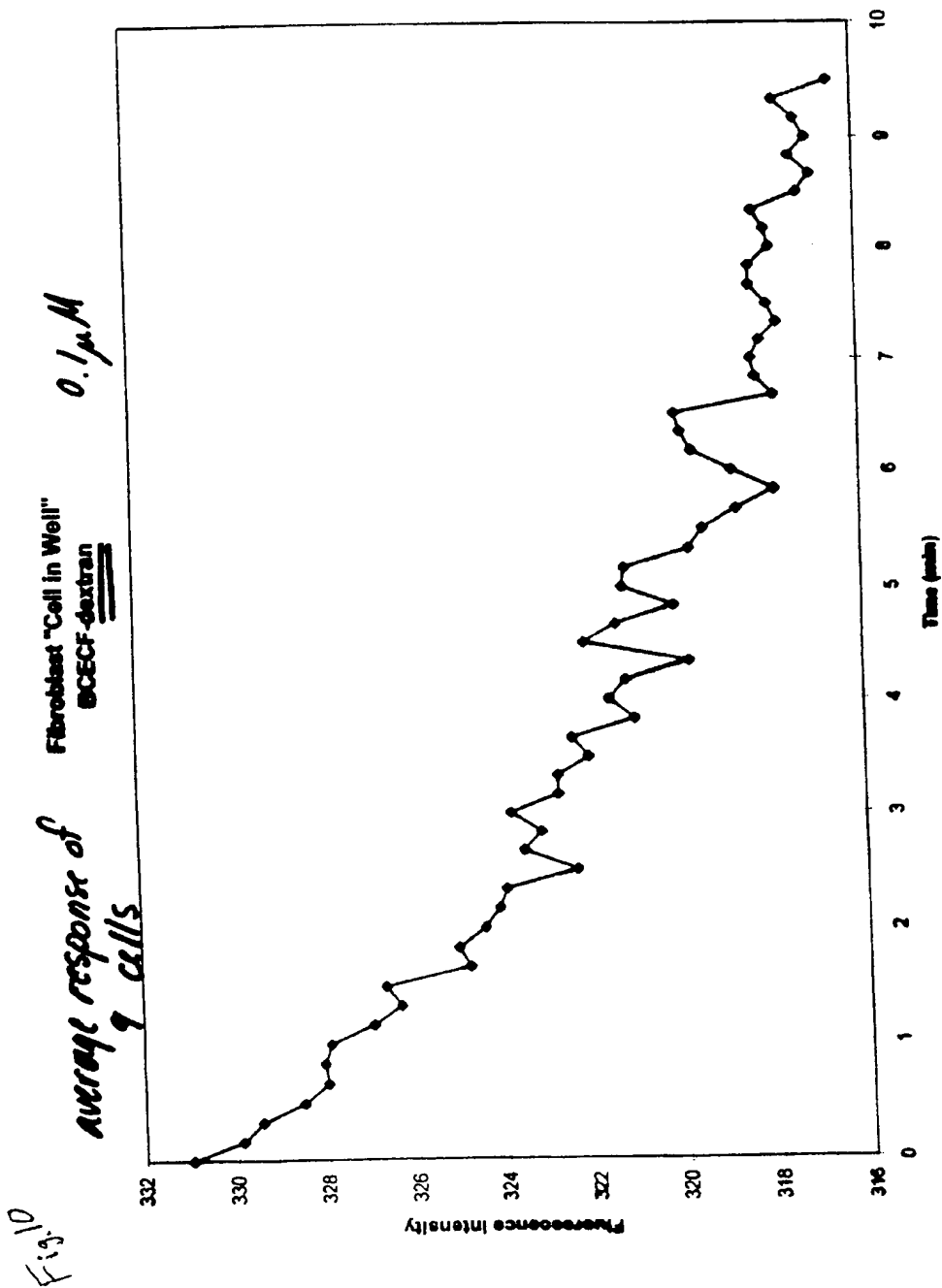
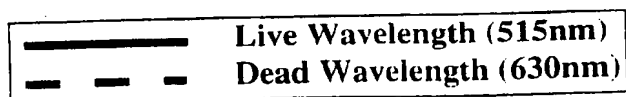
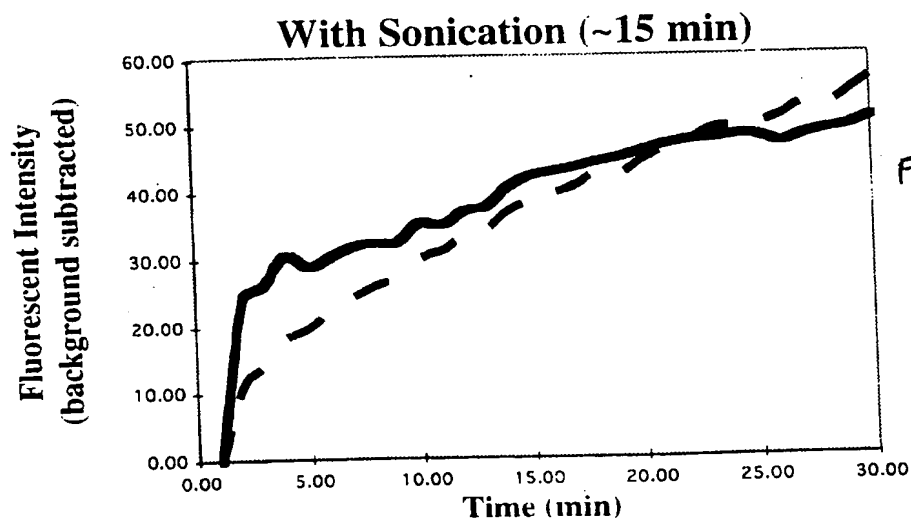
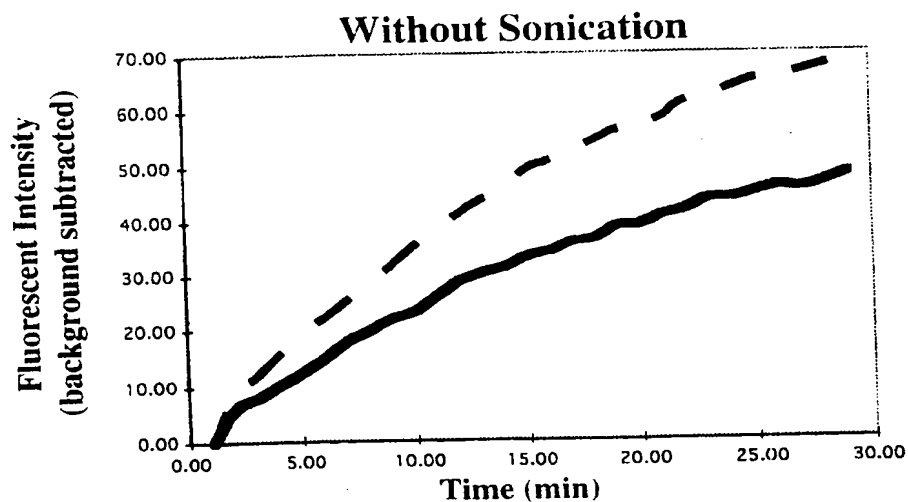


Chart1



# Cell Viability in Etched Microwells

(average response of 25 cells)



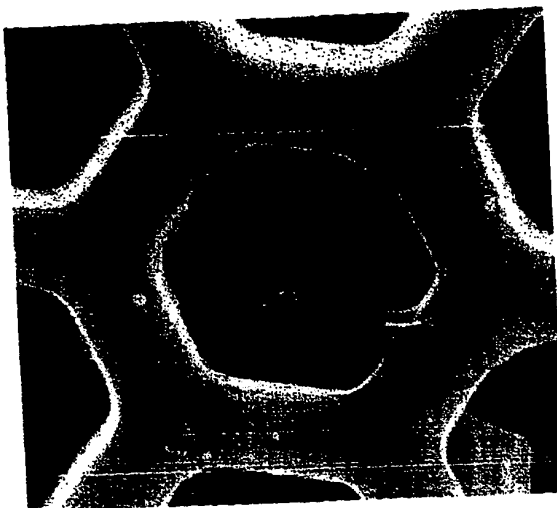
PCT

WORLD INTELLECTUAL PROPERTY ORGANIZATION  
International Bureau



INTERNATIONAL APPLICATION PUBLISHED UNDER THE PATENT COOPERATION TREATY (PCT)

(51) International Patent Classification 6 : <b>C12M 3/04, 1/34</b>		<b>A3</b>	(11) International Publication Number: <b>WO 99/45357</b> (43) International Publication Date: 10 September 1999 (10.09.99)
(21) International Application Number: PCT/US99/04473 (22) International Filing Date: 2 March 1999 (02.03.99) (30) Priority Data: 09/033,462 2 March 1998 (02.03.98) US (71) Applicant (for all designated States except US): TRUSTEES OF TUFTS COLLEGE [US/US]; Tufts University, Ballou Hall, Medford, MA 02155 (US). (72) Inventors; and (75) Inventors/Applicants (for US only): WALT, David, R. [US/US]; 4 Candlewick Close, Lexington, MA 02178 (US). TAYLOR, Laura [US/US]; 15A Bradbury Avenue, Medford, MA 02155 (US). (74) Agent: CREEHAN, R., Dennis; P.O. Box 750070, Arlington Heights, MA 02175-0070 (US).		(81) Designated States: AL, AM, AT, AU, AZ, BA, BB, BG, BR, BY, CA, CH, CN, CU, CZ, DE, DK, EE, ES, FI, GB, GD, GE, GH, GM, HU, ID, IL, IN, IS, JP, KE, KG, KP, KR, KZ, LC, LK, LR, LS, LT, LU, LV, MD, MG, MK, MN, MW, MX, NO, NZ, PL, PT, RO, RU, SD, SE, SG, SI, SK, SL, TJ, TM, TR, TT, UA, UG, US, UZ, VN, YU, ZW, ARIPO patent (GH, GM, KE, LS, MW, SD, SL, SZ, UG, ZW), Eurasian patent (AM, AZ, BY, KG, KZ, MD, RU, TJ, TM), European patent (AT, BE, CH, CY, DE, DK, ES, FI, FR, GB, GR, IE, IT, LU, MC, NL, PT, SE), OAPI patent (BF, BJ, CF, CG, CI, CM, GA, GN, GW, ML, MR, NE, SN, TD, TG).  Published <i>With international search report. Before the expiration of the time limit for amending the claims and to be republished in the event of the receipt of amendments.</i> (88) Date of publication of the international search report: 27 April 2000 (27.04.00)	
(54) Title: BIOSENSOR ARRAY COMPRISING CELL POPULATIONS CONFINED TO MICROCAVITIES			
(57) Abstract <p>A biosensor, sensor array, sensing method and sensing apparatus are provided in which individual cells or randomly mixed populations of cells, having unique response characteristics to chemical and biological materials, are deployed in a plurality of discrete sites in a substrate. In a preferred embodiment, the discrete sites comprise microwells formed at the distal end of individual fibers within a fiber optic array. The biosensor array utilizes an optically interrogatable encoding scheme for determining the identity and location of each type in the array and provides for simultaneous measurements of large numbers of individual cell responses to target analytes. The sensing method utilizes the unique ability of cell populations to respond to biologically significant compounds in a characteristic and detectable manner. The biosensor array and measurement method may be employed in the study of biologically active materials, in situ environmental monitoring, monitoring of a variety of bioprocesses, and for high throughput screening of large combinatorial chemical libraries.</p>			



Scanning Electron Micrograph (SEM) of a single NIH 3T3 mouse fibroblast cell in an etched microwell. Each well has a diameter of 7µm, a depth of 5µm, and a volume of ~145fL.

**FOR THE PURPOSES OF INFORMATION ONLY**

Codes used to identify States party to the PCT on the front pages of pamphlets publishing international applications under the PCT.

AL	Albania	ES	Spain	LS	Lesotho	SI	Slovenia
AM	Armenia	FI	Finland	LT	Lithuania	SK	Slovakia
AT	Austria	FR	France	LU	Luxembourg	SN	Senegal
AU	Australia	GA	Gabon	LV	Latvia	SZ	Swaziland
AZ	Azerbaijan	GB	United Kingdom	MC	Monaco	TD	Chad
BA	Bosnia and Herzegovina	GE	Georgia	MD	Republic of Moldova	TG	Togo
BB	Barbados	GH	Ghana	MG	Madagascar	TJ	Tajikistan
BE	Belgium	GN	Guinea	MK	The former Yugoslav Republic of Macedonia	TM	Turkmenistan
BF	Burkina Faso	GR	Greece	ML	Mali	TR	Turkey
BG	Bulgaria	HU	Hungary	MN	Mongolia	TT	Trinidad and Tobago
BJ	Benin	IE	Ireland	MR	Mauritania	UA	Ukraine
BR	Brazil	IL	Israel	MW	Malawi	UG	Uganda
BY	Belarus	IS	Iceland	MX	Mexico	US	United States of America
CA	Canada	IT	Italy	NE	Niger	UZ	Uzbekistan
CF	Central African Republic	JP	Japan	NL	Netherlands	VN	Viet Nam
CG	Congo	KE	Kenya	NO	Norway	YU	Yugoslavia
CH	Switzerland	KG	Kyrgyzstan	NZ	New Zealand	ZW	Zimbabwe
CI	Côte d'Ivoire	KP	Democratic People's Republic of Korea	PL	Poland		
CM	Cameroon	KR	Republic of Korea	PT	Portugal		
CN	China	KZ	Kazakhstan	RO	Romania		
CU	Cuba	LC	Saint Lucia	RU	Russian Federation		
CZ	Czech Republic	LI	Liechtenstein	SD	Sudan		
DE	Germany	LK	Sri Lanka	SE	Sweden		
DK	Denmark	LR	Liberia	SG	Singapore		
ER	Estonia						

# INTERNATIONAL SEARCH REPORT

International Application No.

PCT/US 99/04473

**A. CLASSIFICATION OF SUBJECT MATTER**  
IPC 6 C12M3/04 C12M1/34

According to International Patent Classification (IPC) or to both national classification and IPC

## B. FIELDS SEARCHED

Minimum documentation searched (classification system followed by classification symbols)

IPC 6 C12M

Documentation searched other than minimum documentation to the extent that such documents are included in the fields searched

Electronic data base consulted during the international search (name of data base and, where practical, search terms used)

## C. DOCUMENTS CONSIDERED TO BE RELEVANT

Category *	Citation of document, with indication, where appropriate, of the relevant passages	Relevant to claim No.
X	FR 2 741 357 A (CORNING INC) 23 May 1997 (1997-05-23)	1-22
Y	the whole document	2,5,6,9, 10,15,19
X	EP 0 539 888 A (SHIMADZU CORP) 5 May 1993 (1993-05-05)	1,3,4, 6-9, 12-14, 16,18, 20,22
Y	figures 6,8	2,5,6,9, 10,15,19
E	WO 99 18434 A (TUFTS COLLEGE ;WALT DAVID R (US); DICKINSON TODD A (US)) 15 April 1999 (1999-04-15) the whole document	1-13
	--- -/-	

☒ Further documents are listed in the continuation of box C.

☒ Patent family members are listed in annex.

### \* Special categories of cited documents:

"A" document defining the general state of the art which is not considered to be of particular relevance  
"E" earlier document but published on or after the international filing date  
"L" document which may throw doubts on priority claim(s) or which is cited to establish the publication date of another citation or other special reason (as specified)  
"O" document referring to an oral disclosure, use, exhibition or other means  
"P" document published prior to the international filing date but later than the priority date claimed

"T" later document published after the international filing date or priority date and not in conflict with the application but cited to understand the principle or theory underlying the invention  
"X" document of particular relevance; the claimed invention cannot be considered novel or cannot be considered to involve an inventive step when the document is taken alone  
"Y" document of particular relevance; the claimed invention cannot be considered to involve an inventive step when the document is combined with one or more other such documents, such combination being obvious to a person skilled in the art.  
"&" document member of the same patent family

Date of the actual completion of the international search

2 March 2000

Date of mailing of the international search report

09/03/2000

Name and mailing address of the ISA

European Patent Office, P.B. 5818 Patentlaan 2  
NL - 2280 HV Rijswijk  
Tel. (+31-70) 340-2040, Tx. 31 651 epo nl,  
Fax: (+31-70) 340-3016

Authorized officer

Coucke, A



# INTERNATIONAL SEARCH REPORT

International Application No  
PCT/US 99/04473

C.(Continuation) DOCUMENTS CONSIDERED TO BE RELEVANT		
Category	Citation of document, with indication, where appropriate, of the relevant passages	Relevant to claim No.
Y	US 5 690 894 A (PINKEL DANIEL ET AL) 25 November 1997 (1997-11-25) cited in the application claims; figures -----	2,5,6,9, 10,15,19

# INTERNATIONAL SEARCH REPORT

Information on patent family members

International Application No

PCT/US 99/04473

Patent document cited in search report	Publication date	Patent family member(s)	Publication date
FR 2741357 A	23-05-1997	EP 0862540 A WO 9719027 A	09-09-1998 29-05-1997
EP 0539888 A	05-05-1993	JP 5127099 A DE 69210753 D DE 69210753 T US 5348883 A	25-05-1993 20-06-1996 02-10-1996 20-09-1994
WO 9918434 A	15-04-1999	AU 1269599 A	27-04-1999
US 5690894 A	25-11-1997	NONE	

**This Page is Inserted by IFW Indexing and Scanning  
Operations and is not part of the Official Record**

**BEST AVAILABLE IMAGES**

Defective images within this document are accurate representations of the original documents submitted by the applicant.

Defects in the images include but are not limited to the items checked:

- ☐ **BLACK BORDERS**
- ☐ **IMAGE CUT OFF AT TOP, BOTTOM OR SIDES**
- ☐ **FADED TEXT OR DRAWING**
- ☐ **BLURRED OR ILLEGIBLE TEXT OR DRAWING**
- ☐ **SKEWED/SLANTED IMAGES**
- ☒ **COLOR OR BLACK AND WHITE PHOTOGRAPHS**
- ☐ **GRAY SCALE DOCUMENTS**
- ☐ **LINES OR MARKS ON ORIGINAL DOCUMENT**
- ☐ **REFERENCE(S) OR EXHIBIT(S) SUBMITTED ARE POOR QUALITY**
- ☐ **OTHER:** \_\_\_\_\_

**IMAGES ARE BEST AVAILABLE COPY.**

**As rescanning these documents will not correct the image problems checked, please do not report these problems to the IFW Image Problem Mailbox.**